

Diesel Engines Series 60

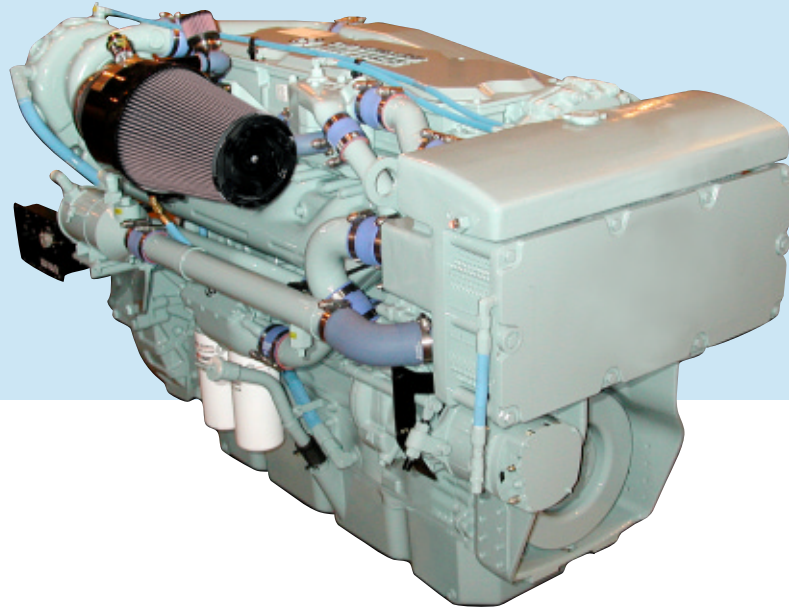
for Marine Applications

Maximum Continuous 1B

354 - kW

480 - mhp

475 - bhp



Compliant

with MARPOL 73/78 (IMO)

Annex VI NO_x Limits

EPA Tier II

Engine Specifications

Version	In-line 6 cylinder
Displacement	14.0 liters (855 cu in)
Bore and Stroke	133 mm x 168 mm (5.24 in. x 6.61 in.)
Description	Turbocharged and charge air cooled
Governor	DDEC
Port Model	6062HK33/35
Starboard Model	6062HK32/34

Standard Power Rating

Air Temp. 25 °C	kW	mhp	bhp	rpm
Sea Water Temp. 25 °C				
Rated Power	354	480	475	2100
Rating Conditions	SAE J 1228			

Standard Boat Profile

100% Power, 50% Time
85% Power, 25% Time
<15% Power, 25% Time

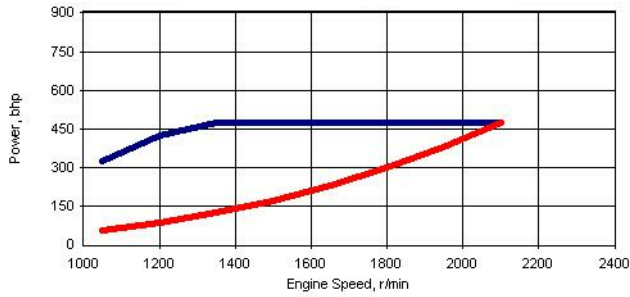
Typical applications

- Crew Boats
- Water Taxis
- Pilot Boats
- Ferry Boats
- Patrol Boats



DaimlerChrysler Off-Highway

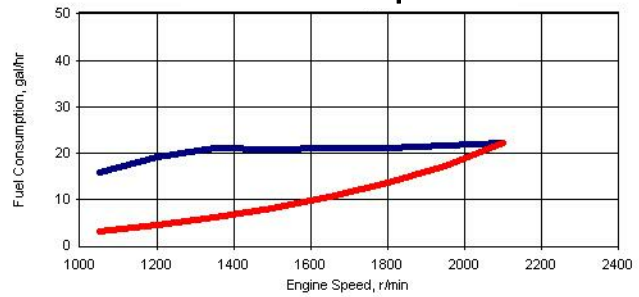
BHP



■ Rated BHP ■ Prop BHP

Power output guaranteed within +2/-0% at SAE J1228 conditions:
 77°F (25°C) air inlet temperature
 29.31 in. Hg (99 kPa) dry barometer
 100°F (38°C) fuel inlet temperature
 .853 specific gravity at 60°F (15°C)

Fuel Consumption



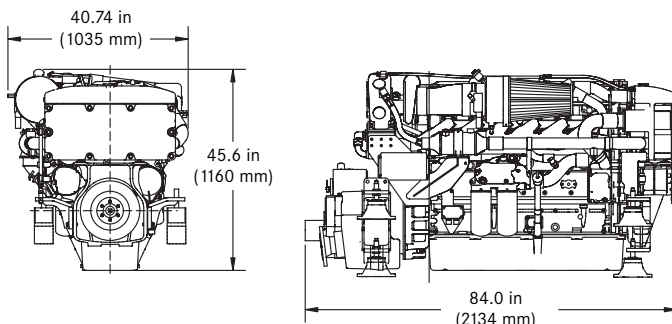
■ Rated Fuel Consumption ■ Prop Fuel Consumption

Performance shown includes:
 Air intake restriction: 10 in. H₂O (2.5kPa)
 Exhaust back pressure: 15 in. H₂O (3.7kPa)
 Fuel Density: 7.11 lb/gal

Rating Definition - Maximum Continuous

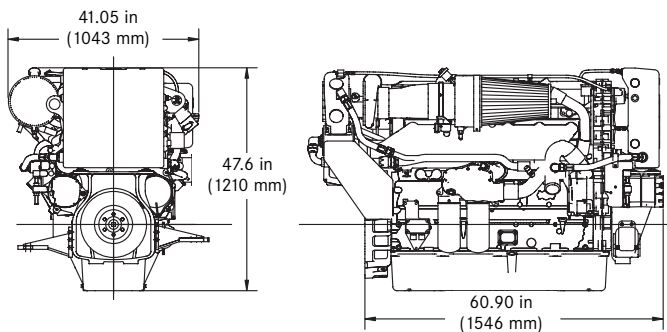
The marine continuous-maximum rating applies to medium to high speed commercial boats that operate at moderate to low load factors. Duration of full throttle operation is limited to 75% of total operating time.

Dimensional Information - Heat Exchanged



Dry Weight w/ TD5114A Marine Gear: 4,240 lbs. (1923 kg)

Dimensional Information - Keel Cooled



Dry Weight w/o Marine Gear: 3,525 lbs. (1599kg)

All dimensions are approximate. For complete dimensional information, refer to installation drawing provided by your authorized Detroit Diesel Corporation representative. Marine transmission shown represents standard option marine gear.

Standard Equipment

Main Engines - Water-cooled exhaust components; Aluminum flywheel housing size SAE #1, "Workboat Blue" finish

Fuel System - Electronic unit injection system; secondary fuel filter mounted on engine

Engine Oil System - Dual filters mounted on engine

Engine Cooling System (6062HK34/35) - Titanium plate modular heat exchanger system with integral fuel cooler; sea water cooled charge air cooler; gear driven self-priming raw water pump with 2.5" inlet

Engine Cooling System (6062HK32/33) - Engine equipped for Keel cooling including expansion tank, separate circuit cooling pump, engine fuel cooler, and marine gear oil cooler

Air Inlet System - Air intake filter with silencer and closed breather system; 24V emergency air shutdown

Electrical - Starter: 24V, Alternator: 24V/100 amp, belt driven

Engine Mounting - Engine mounts with isolators or solid mount

Marine Gear - DDC shallow case electric shift marine gear; gear oil cooler in raw water circuit

Port/STBD Engine Configuration - For ease of service and maintenance

Optional Equipment

Flywheel Housing - Cast iron

Engine Lube System - Remote mount lube oil filters - single or double

Electrical - 12V starter; 12V alternator/130 amp; 12V Amot air shutdown

Accessory Drives - SAE A (front gear train), Front crankshaft pulley for use with V-belts & interface for remote PTO

Transmission - Deep case, Down Angle

Transmission Options - Trolling valve, companion flange and PTO

Exhaust - Raw water cooled stainless elbow (heat exchanger cooled only)

Front PTO - Direct Drive Front PTO rated at either 350 or 525 ft. lbs.

Marine Society Certification - Available upon request



For more information contact your MTU or DDC distributor. All Detroit Diesel distributors in NAFTA are authorized MTU distributors.
www.mtu-online.com / www.detroitdiesel.com / marine@detroitdiesel.com