

Diesel Engines Series 60

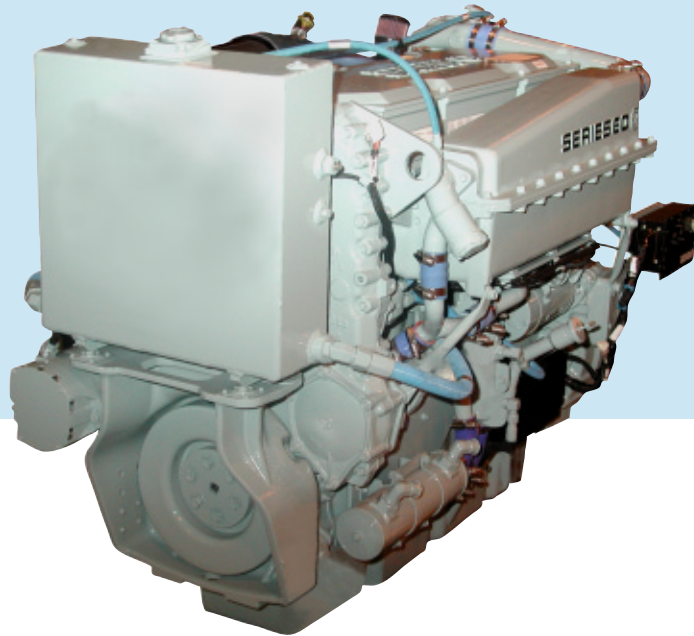
for Marine Applications

Continuous 1A

317 - kW

430 - mhp

425 - bhp



Compliant
with MARPOL 73/78 (IMO)
Annex VI NO_x Limits
EPA Tier II

Engine Specifications

Version	In-line 6 cylinder
Displacement	14.0 liters (855 cu in)
Bore and Stroke	133 mm x 168 mm (5.24 in. x 6.61 in.)
Description	Turbocharged and charge air cooled
Governor	DDEC
Port Model	6062HK37/39
Starboard Model	6062HK36/38

Standard Power Rating

Air Temp. 25 °C	kW	mhp	bhp	rpm
Sea Water Temp. 25 °C				
Rated Power	317	430	425	1800
Rating Conditions	SAE J1228			

Standard Boat Profile

100% Power, 10% Time
90% Power, 80% Time
<10% Power, 10% Time

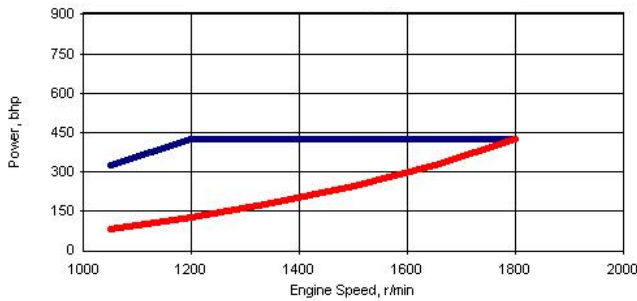
Typical applications

- Tugs
- Tow Boats
- Off Shore Supply
- Fishing Trawlers & Dragners



DaimlerChrysler Off-Highway

BHP



■ Rated Power ■ Cubic Prop Power

Power output guaranteed within +2/-0% at SAE J1228 conditions:
 77°F (25°C) air inlet temperature
 29.31 in. Hg (99 kPa) dry barometer
 100°F (38°C) fuel inlet temperature
 .853 specific gravity at 60°F (15°C)

Fuel Consumption



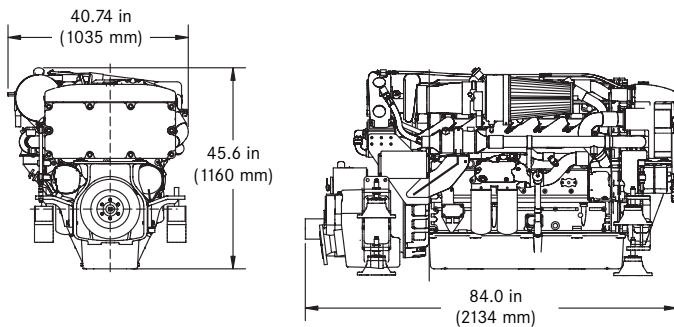
■ Rated Fuel Consumption ■ Cubic Prop Fuel Consumption

Performance shown includes:
 Air intake restriction: 10 in. H₂O (2.5kPa)
 Exhaust back pressure: 15 in. H₂O (3.7kPa)
 Fuel Density: 7.11 lb/gal

Rating Definition - Marine Continuous

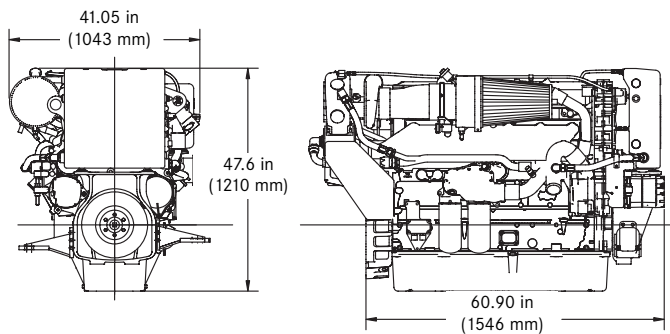
The continuous rating applies to medium or low speed boats (normally of the displacement type) which operate up to 24 hours a day, 365 days a year, at high load factors.

Dimensional Information - Heat Exchanged



Dry Weight w/ TD5114A Marine Gear: 4,240 lbs. (1923 kg)

Dimensional Information - Keel Cooled



Dry Weight w/o Marine Gear: 3,525 lbs. (1599kg)

All dimensions are approximate. For complete dimensional information, refer to installation drawing provided by your authorized Detroit Diesel Corporation representative. Marine transmission shown represents standard option marine gear.

Standard Equipment

Main Engines - Water-cooled exhaust components; Cast iron flywheel housing size SAE # 1, "Workboat Blue" finish

Fuel System - Electronic unit injection system; secondary fuel filter mounted on engine

Engine Oil System - Dual filters mounted on engine

Engine Cooling System (6062HK38/39) - Titanium plate modular heat exchanger system with integral fuel cooler; sea water cooled charge air cooler; gear driven self-priming raw water pump with 2.5" inlet

Engine Cooling System (6062HK36/37) - Engine equipped for Keel cooling including expansion tank, separate circuit cooling pump, engine fuel cooler, and marine gear oil cooler

Air Inlet System - Air intake filter with silencer and closed breather system; 24V emergency air shutdown

Electrical - Starter: 24V, Alternator: 24V/100 amp, belt driven

Engine Mounting - Engine mounts with isolators or solid mount

Marine Gear - Deep case electric shift marine gear; gear oil cooler in raw water circuit

Port/STBD Engine Configuration - For ease of service and maintenance

Optional Equipment

Engine Lube System - Remote mount lube oil filters - single or double

Electrical - 12V starter; 12V alternator/130 amp; 12V Amot air shutdown

Accessory Drives - SAE A (front gear train), Front crankshaft pulley for use with V-belts & interface for remote PTO

Transmission - Shallow case, Down angle

Transmission Options - Trolling valve, companion flange and PTO

Exhaust - Raw water cooled stainless elbow (heat exchanger cooled only)

Front PTO - Direct Drive Front PTO rated at either 350 or 525 ft. lbs.

Marine Society Certification - Available upon request



For more information contact your MTU or DDC distributor. All Detroit Diesel distributors in NAFTA are authorized MTU distributors.
www.mtu-online.com / www.detroitdiesel.com / marine@detroitdiesel.com