



Parts Book

DF 2.5 (2006-2009)



1703 Hwy 35 So., Laurence Harbor, NJ 08879

(732) 264-7176

(800) 338-0645 FAX (732) 264-2472

www.brownspoint.com

PREFACE

When it becomes necessary to replace parts on SUZUKI OUTBOARD MOTORS, always use SUZUKI GENUINE PARTS which have passed a strict inspection which guarantees quality and performance.

This parts catalog covers the list of all service parts for SUZUKI DF2.5 '06~'09 MODEL.

INSTRUCTIONS FOR QUOTING THE CATALOG

1. DIMENSIONS

Dimensions of the parts in this catalog are indicated in unit millimeters.

2. ABBREVIATIONS

Abbreviations used in this catalog are as follows:

AR	: As required	NT	: Number of teeth
ASSY	: Assembly	OPT	: Optional
E.NO.	: Engine number	OS	: Over size
F.NO.	: Frame number	STD	: Standard
D	: Diameter of material	T	: Thickness
ID	: Inside diameter	US	: Under size
OD	: Outside diameter	W	: Width
L	: Length	W/	: With
LH(PORT)	: Left hand side	S,L	: Transom type
RH(STBD)	: Right hand side	SUS	: Stainless steel

~123456 : Up to E.NO.00251F-123456

123456~ : From E.NO.00251F-123456

12 x 34 x 5.6..... Figures in the description column

| | | show the dimensions of parts.

ID OD T(or W,L)

→12345-56781 (Parts No.) : indicates that the parts number was changed to 12345-56781 and the new parts are interchangeable with the former ones but the former ones are not interchangeable with new ones.

←12345-56781 (Parts No.) : indicates that the former and new parts are interchangeable with each other and both are usable.

3. INNER PARTS OF ASSEMBLY

Part name with a dot (.) in front as shown in the description column indicates the component of the assembly also available individually.

4. MODIFICATION NOTICE

A parts bulletin will be sent to you on all occasions when changes in parts occur, including interchangeable modifications between new parts and old ones.

5. NOTE

5-1. There are some different parts from those of production models among spare parts for the administrative reasons and common use of them with other models.

5-2. In respect of rubber hoses and vinyl tubes, please be sure to use them by cutting off according to the length mentioned on parts catalog or what is actually required on the vehicle.

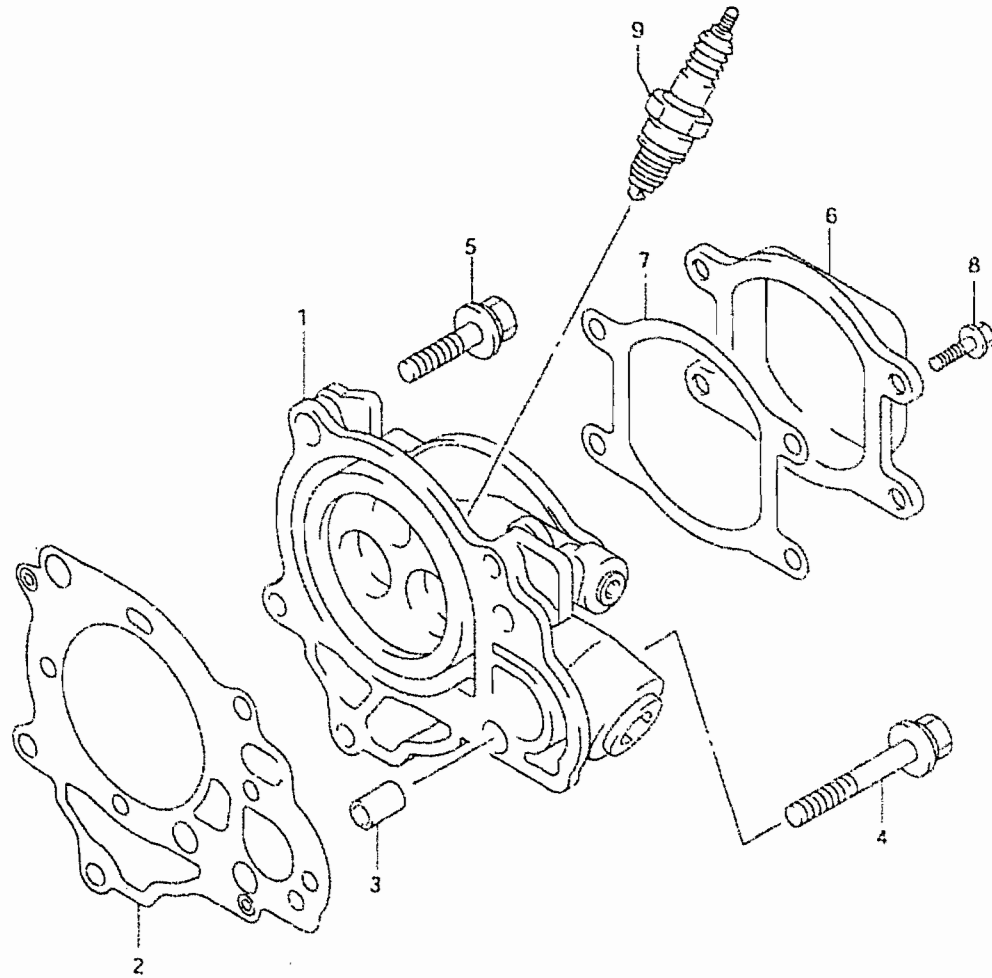
5-3. Note that the drawings on the illustration page are for ready reference of spare parts number, not to be used as an assembly manual. When assembling, use "SUZUKI SERVICE MANUAL".

6. MODEL NAME AND ENGINE NUMBER

MODEL	YEAR'S	TYPE	TRANSOM	ENGINE No.
DF2.5SK6	'06	00251F	S	00251F-680001~
DF2.5SK7	'07	00251F	S	00251F-780001~
DF2.5SK8	'08	00251F	S	00251F-880001~
DF2.5SK9	'09	00251F	S	00251F-980001~

FIG.1

Fig.1 (B-2) CYLINDER HEAD



Ref #	Part Number	Description	Qty	Remarks
1-1	11110-97J00	HEAD, CYLINDER	1	
1-2	11110-97J10	HEAD, CYLINDER	1	MODEL:08~09
2	11141-97J02	GASKET, CYLINDER HEAD	1	
3	09206-08008	PIN, DOWEL	2	
4	11118-97J00	BOLT, CYLINDER HEAD	1	
5	11119-97J00	BOLT, CYLINDER HEAD	4	
6	11171-97J00	COVER, CYLINDER HEAD	1	
7	11189-97J00	GASKET, CYLINDER HEAD COVER	1	
8	01547-05107	BOLT	4	
9	09482-00406	PLUG, SPARK (CR6HSA)	1	



FIG.2

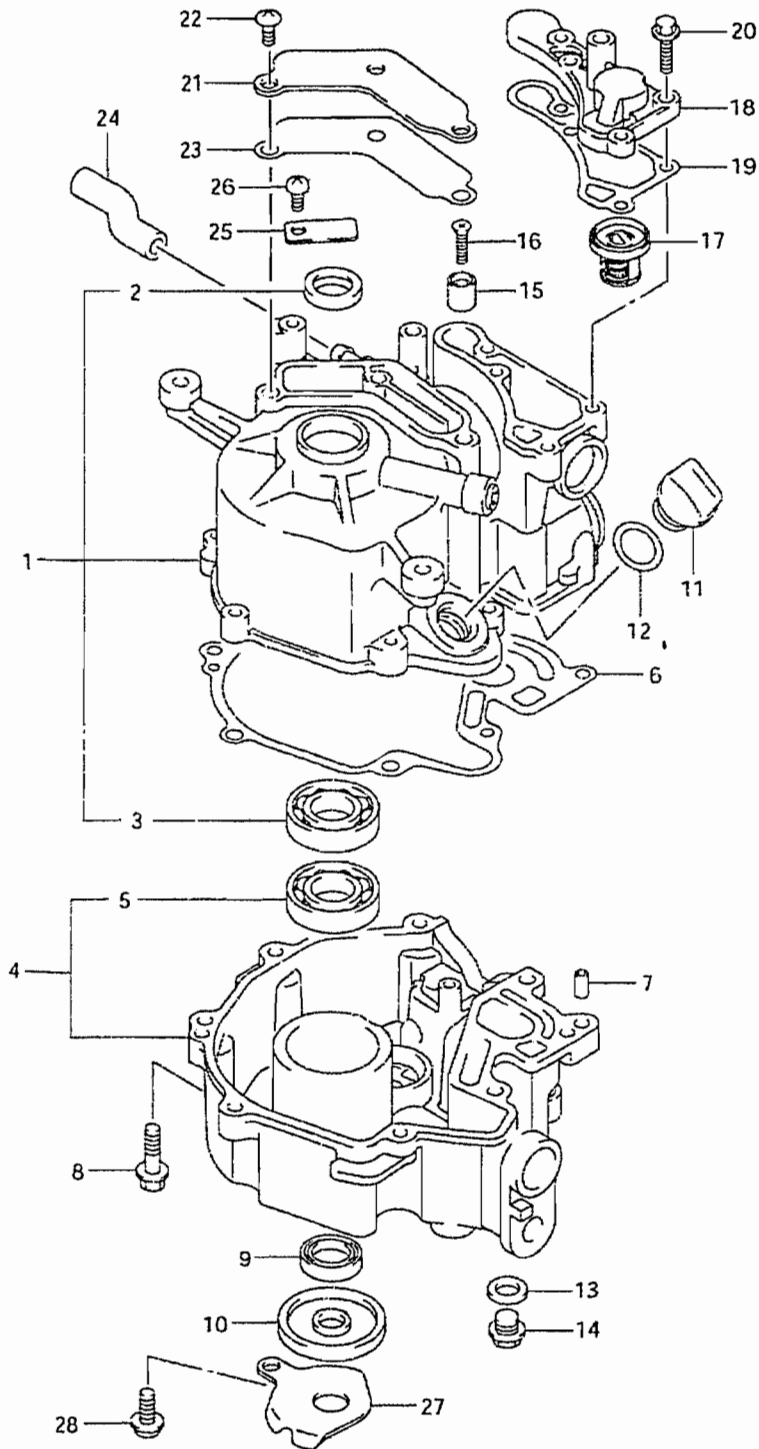


Fig.2 (B-3) CYLINDER BLOCK

Ref #	Part Number	Description	Qty	Remarks
1	11200-97J00	BLOCK ASSY, CYLINDER	1	
2	59295-97J00	.SEAL, CRANKSHAFT OIL	1	
3	09262-17023	.BEARING, CRANKSHAFT UPPER	1	
4	11300-97J00	CASE ASSY, CRANKSHAFT	1	
5	09262-17023	.BEARING, CRANKSHAFT LOWER	1	
6	11351-97J01	GASKET, CRANKCASE	1	
7	04221-05109	PIN, DOWEL	2	
8	01550-06257	BOLT, CRANKCASE	8	
9	59295-97J10	SEAL, DRIVE SHAFT OIL	1	
10	59295-97J20	SEAL, CRANKSHAFT OIL LOWER	1	
11	11382-97J00	CAP, OIL FILLER	1	
12	09280-15007	O RING, CAP (D:2.4 ID:15.8)	1	
13	09168-10022	GASKET, DRAIN PLUG	1	
14	09248-10008	PLUG, DRAIN (10X7.5)	1	
15	55321-95J00	ANODE, PROTECTION	1	
16	09126-05011	SCREW, PROTECTION ANODE	1	
17	17670-91J00	THERMOSTAT	1	
18-1	17681-97J00	COVER, THERMOSTAT	1	
18-2	17681-97J10	COVER, THERMOSTAT	1	MODEL:09
19	17685-97J00	GASKET, THERMOSTAT COVER	1	
20	01550-06207	BOLT, THERMOSTAT COVER	4	
21	11173-97J00	PLATE, BREATHER	1	
22	02142-06127	BOLT, BREATHER PLATE	3	
23	11179-97J00	GASKET, BREATHER PLATE	1	
24	11174-97J00	HOSE, BREATHER	1	
25	11452-91J00	VALVE, REED	1	
26	02112-0612A	SCREW, REED VALVE	1	
27	11431-97J11	PLATE, UNDER OIL SEAL	1	
28	11432-97J00	BOLT, UNDER OIL SEAL PLATE	1	

FIG.3

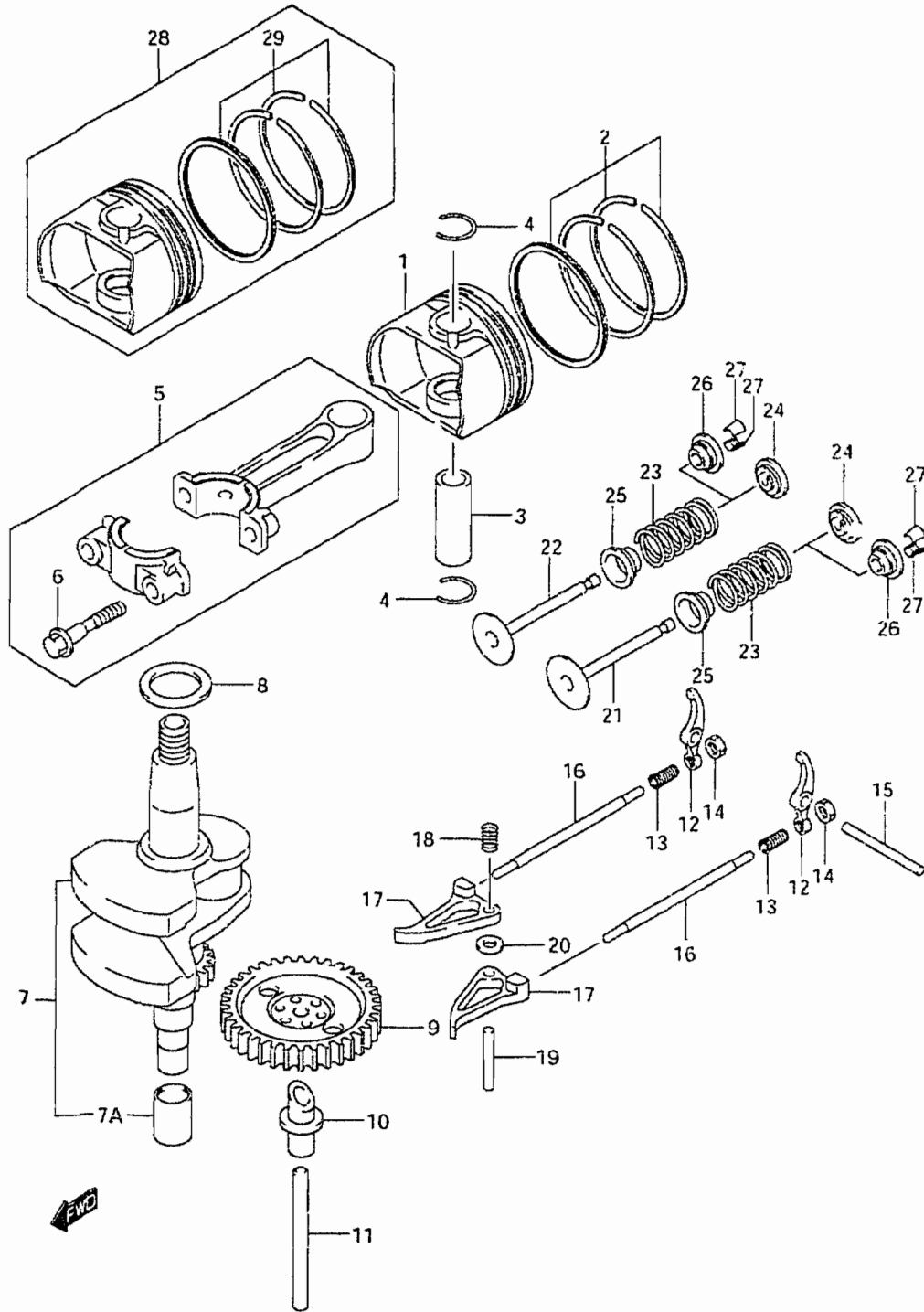
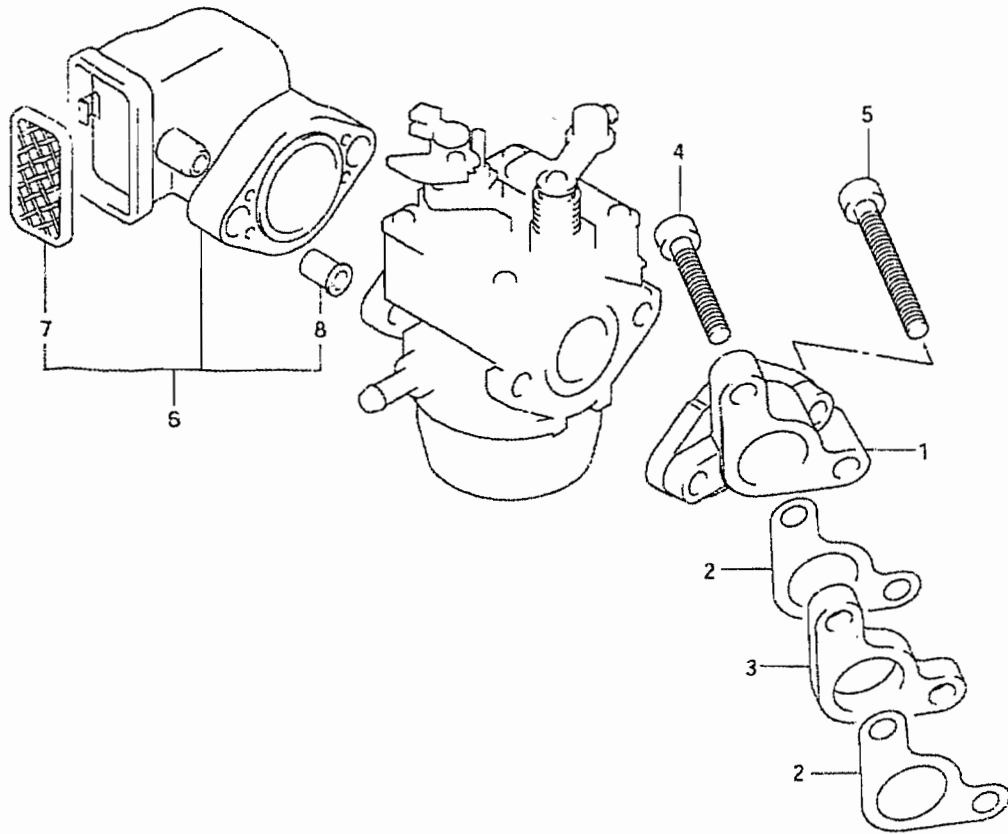


Fig.3 (B-4) CRANKSHAFT

Ref #	Part Number	Description	Qty	Remarks
1-1	12111-97J00-0B0	PISTON	1	
1-2	12111-97J10-0B0	PISTON	1	MODEL:08~09
2	12140-97J00	RING SET, PISTON	1	
3	12151-97J00	PIN, PISTON	1	
4	59382-97J00	CIRCLIP	2	
5	12160-97J00-0A0	CONNROD ASSY	1	RED
6	12163-92F00	.BOLT CONNROD	2	
7	12220-97J01-0B0	CRANKSHAFT	1	NO PAINT
7A	12242-97J00	.SPLINE	1	
8	08211-17241	WASHER, CRANKSHAFT THRUST	1	
9	12710-97J00	CAMSHAFT	1	
10	12742-97J00	SHAFT, OIL PUMP	1	
11	12743-97J00	SHAFT	1	
12-1	12840-97J00	ARM ASSY, VALVE ROCKER	2	
12-2	12840-97J10	ARM ASSY, VALVE ROCKER	2	MODEL:09
13	12842-22G10	.SCREW, TAPPET ADJUSTING	2	
14	12843-27A00	.NUT, TAPPET ADJUSTING	2	
15	09261-04017	SHAFT, VALVE ROCKER ARM	1	
16	12894-97J00	ROD, PUSH	2	
17	12845-97J00	ARM, CAM ROCKER	2	
18	12847-22G00	SPRING, CAM ROCKER ARM	1	
19	09261-04005	SHAFT, CAM ROCKER ARM	1	
20	08322-0104A	WASHER, CAM ROCKER ARM	2	
21-1	12911-97J00	VALVE, INTAKE	1	
21-2	12911-97J10	VALVE, INTAKE	1	MODEL:09
22-1	12915-97J00	VALVE, EXHAUST	1	
22-2	12915-97J10	VALVE, EXHAUST	1	MODEL:09
23-1	12921-97J00	SPRING, VALVE	2	
23-2	12921-97J20	SPRING, VALVE	2	MODEL:09
24	12931-22G00	RETAINER, VALVE SPRING	2	MODEL:06~08
25	09289-04006	SEAL, VALVE STEM OIL	2	
26	12931-97J00	RETAINER, VALVE SPRING	2	MODEL:09
27	12932-05C00	COTTER, VALVE	4	MODEL:09
28	12100-97J00-050	PISTON SET (OS:0.50)	1	OPT
29	12140-97J00-050	.RING SET, PISTON (OS:0.50)	1	OPT

FIG.4

Fig.4 (B-5) INTAKE PIPE / SILENCER



Ref #	Part Number	Description	Qty	Remarks
1	13111-97J00	PIPE, INTAKE	1	
2	13119-97J00	GASKET, INTAKE PIPE	2	
3	13124-97J00	INSULATOR, CARBURETOR	1	
4	07120-06257	BOLT, INTAKE PIPE	1	
5	07120-06357	BOLT, INTAKE PIPE	1	
6	13810-97J00	SILENCER	1	
7	13710-97J00	.ARRESTER, FLAME	1	
8	09180-06348	.SPACER	2	

FIG.5

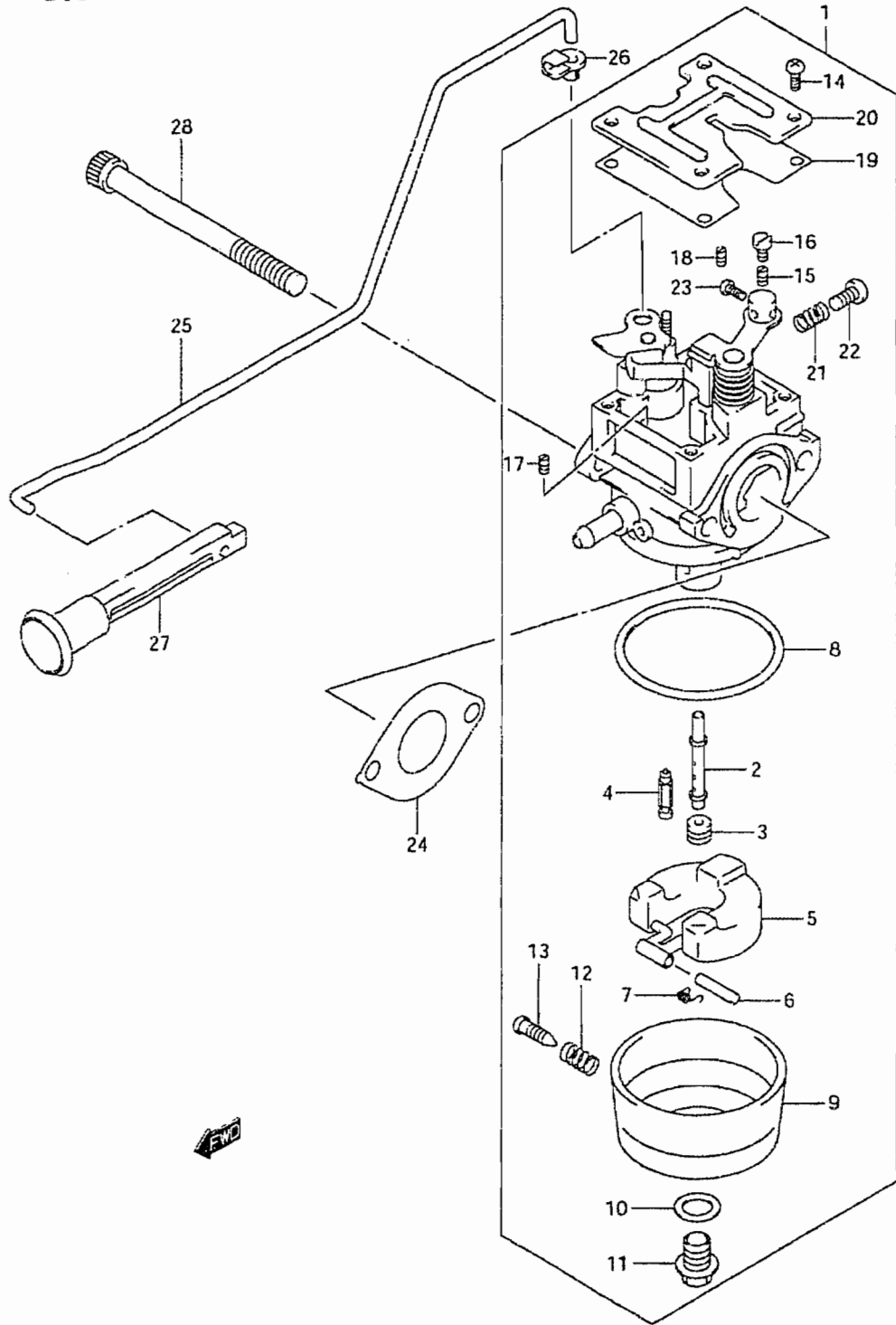


Fig.5 (B-6) CARBURETOR

Ref #	Part Number	Description	Qty	Remarks
1-1	13200-97J10	CARBURETOR	1	
1-2	13200-97J20	CARBURETOR	1	MODEL:07
1-3	13200-97J40	CARBURETOR	1	MODEL:08~09
2-1	13236-97J10	.NOZZLE, MAIN	1	
2-2	13236-97J20	.NOZZLE, MAIN	1	MODEL:07~09
3-1	09491-68006	.JET, MAIN (68)	1	OPT
3-2	09491-70018	.JET, MAIN (70)	1	
3-3	09491-72015	.JET, MAIN (72)	1	OPT
3-4	09491-62009	.JET, MAIN (62)	1	MODEL:07~09 OPT
3-5	09491-64003	.JET, MAIN (64)	1	MODEL:07~09
3-6	09491-66005	.JET, MAIN (66)	1	MODEL:07~09 OPT
4	13371-97J00	.VALVE, NEEDLE	1	
5	13250-97J00	.FLOAT	1	
6	13254-97J00	.PIN, FLOAT	1	
7	13268-97J30	.SPRING	1	
8	13251-97J00	.GASKET	1	
9	13245-97J00	.CHAMBER, FLOAT	1	
10	13249-97J00	.GASKET	1	
11	13247-97J00	.SCREW	1	
12	13268-97J10	.SPRING	1	
13	13616-97J00	.SCREW	1	
14	13267-97J00	.SCREW	4	
15-1	09492-30018	.JET, PILOT (30)	1	OPT
15-2	09492-32011	.JET, PILOT (32)	1	
15-3	09492-34004	.JET, PILOT (34)	1	OPT
16	13267-97J10	.SCREW	1	
17	09493-34005	.JET, AIR (170)	1	
18	09493-29004	.JET, PILOT AIR (145)	1	
19	13249-97J10	.GASKET	1	
20	13248-97J00	.PLATE	1	

FIG.5

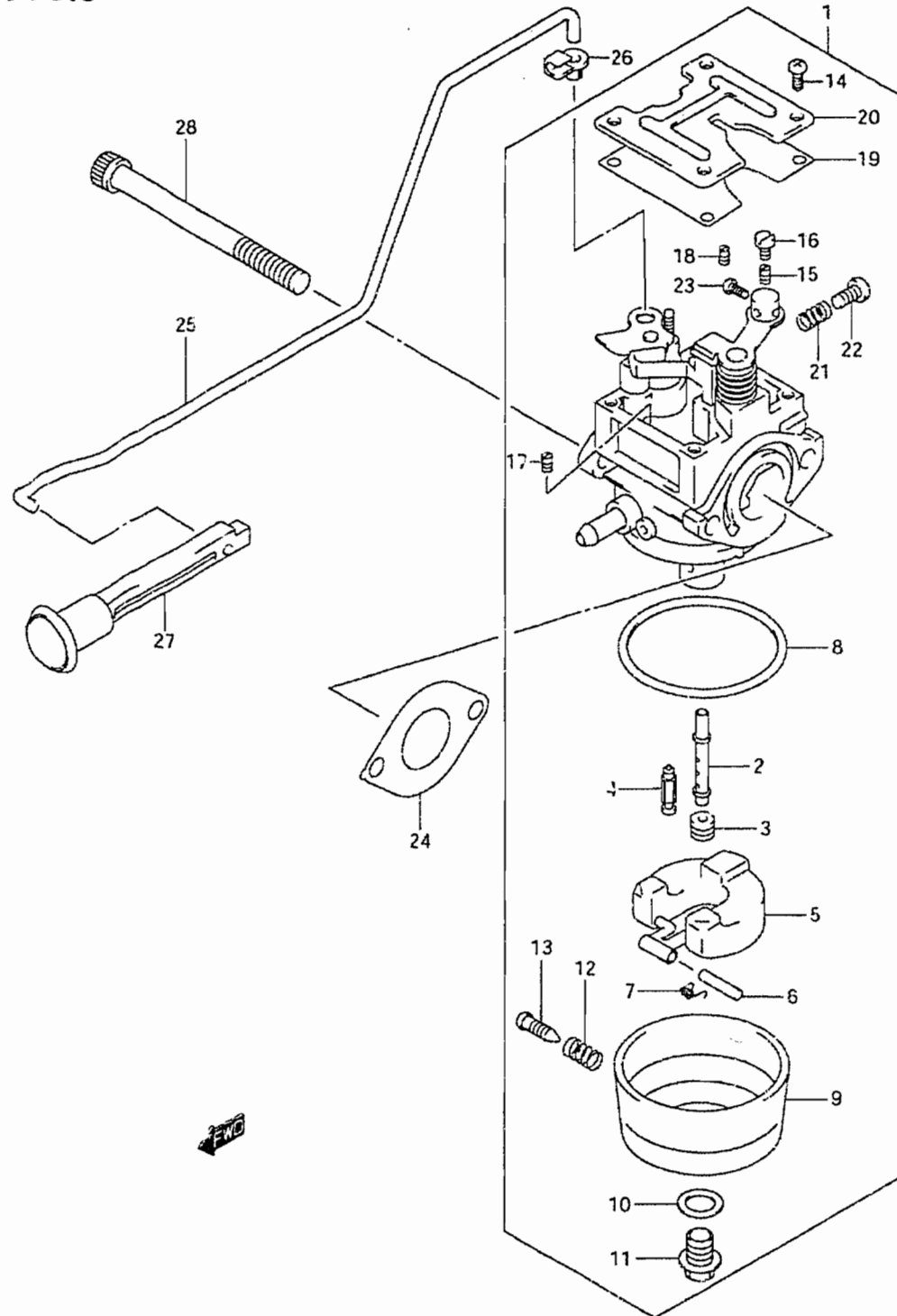
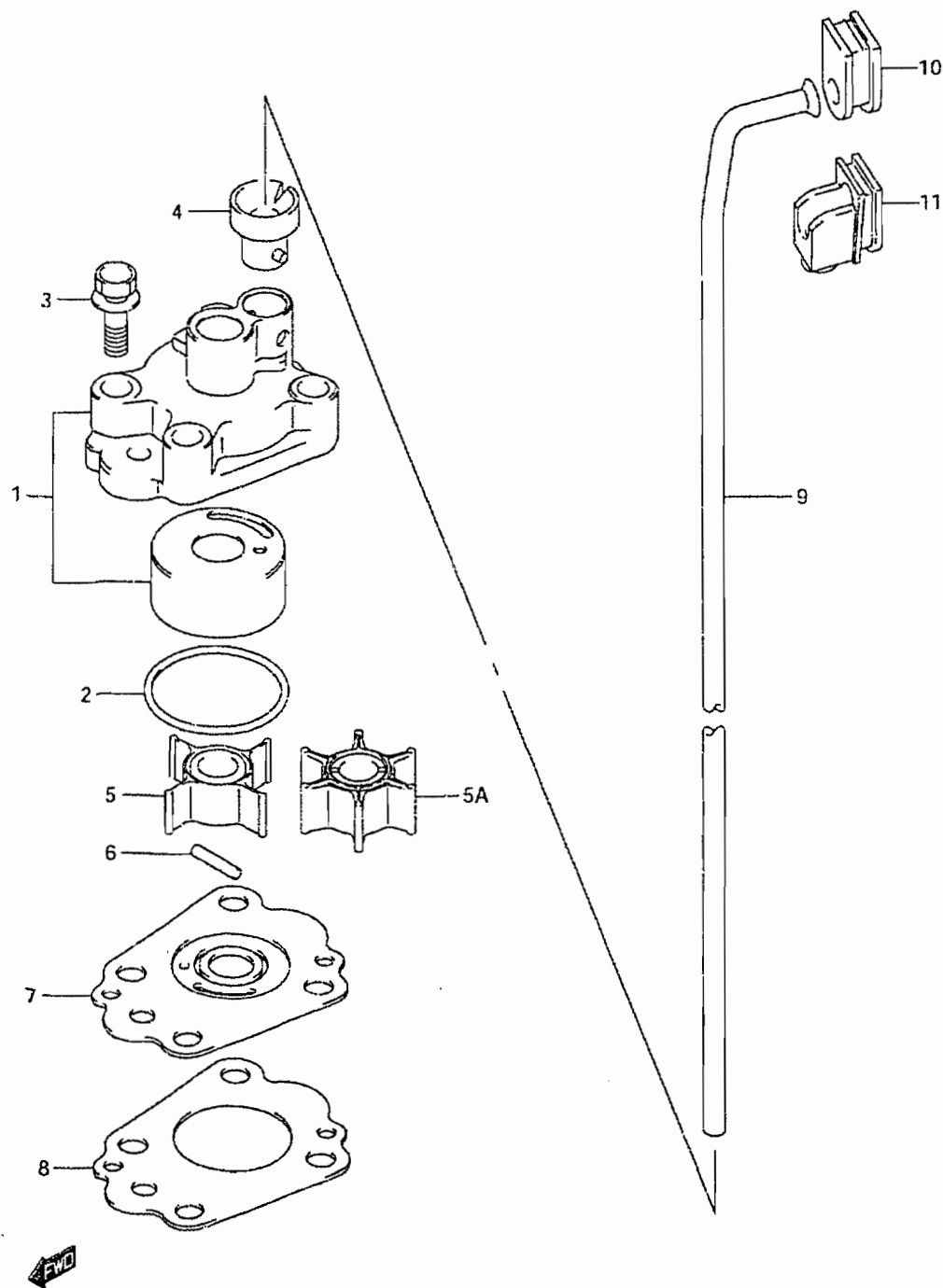


Fig.5 (B-7) CARBURETOR

Ref #	Part Number	Description	Qty	Remarks
21	13268-97J20	.SPRING	1	
22	13534-97J00	.SCREW	1	
23	13267-97J20	.SCREW	1	
24	13125-97J00	GASKET, CARBURETOR	1	
25	13413-97J00	ROD, CHOKE	1	
26	13436-91J00	CONNECTOR, CHOKE ROD	1	
27	13631-91J00	KNOB, CHOKE	1	
28	01547-06757	BOLT	2	

FIG.6

Fig.6 (B-8) WATER PUMP



Ref #	Part Number	Description	Qty	Remarks
1	17410-97J00	CASE, WATER PUMP	1	
2	09280-33005	SEAL, WATER PUMP CASE	1	
3	09116-06207	BOLT (6X30)	4	
4	17415-97J00	GROMMET, WATER PUMP CASE	1	
5	17461-97J00	IMPELLER, WATER PUMP	1	MODEL:06~08 ->17461-97J10
5A	17461-97J10	IMPELLER, WATER PUMP	1	MODEL:09
6	09202-02005	PIN, PUMP CASE IMPELLER	1	
7	17471-97J00	PANEL, PUMP CASE UNDER	1	
8	17472-97J00	GASKET, PUMP CASE PANEL	1	
9-1	17561-97J00	TUBE, WATER (S)	1	
9-2	17561-97J10	TUBE, WATER (S)	1	MODEL:09
10	17563-97J00	GROMMET, WATER TUBE UPPER	1	MODEL:06~08
11	17563-97J10	GROMMET, WATER TUBE UPPER	1	MODEL:09

FIG.7

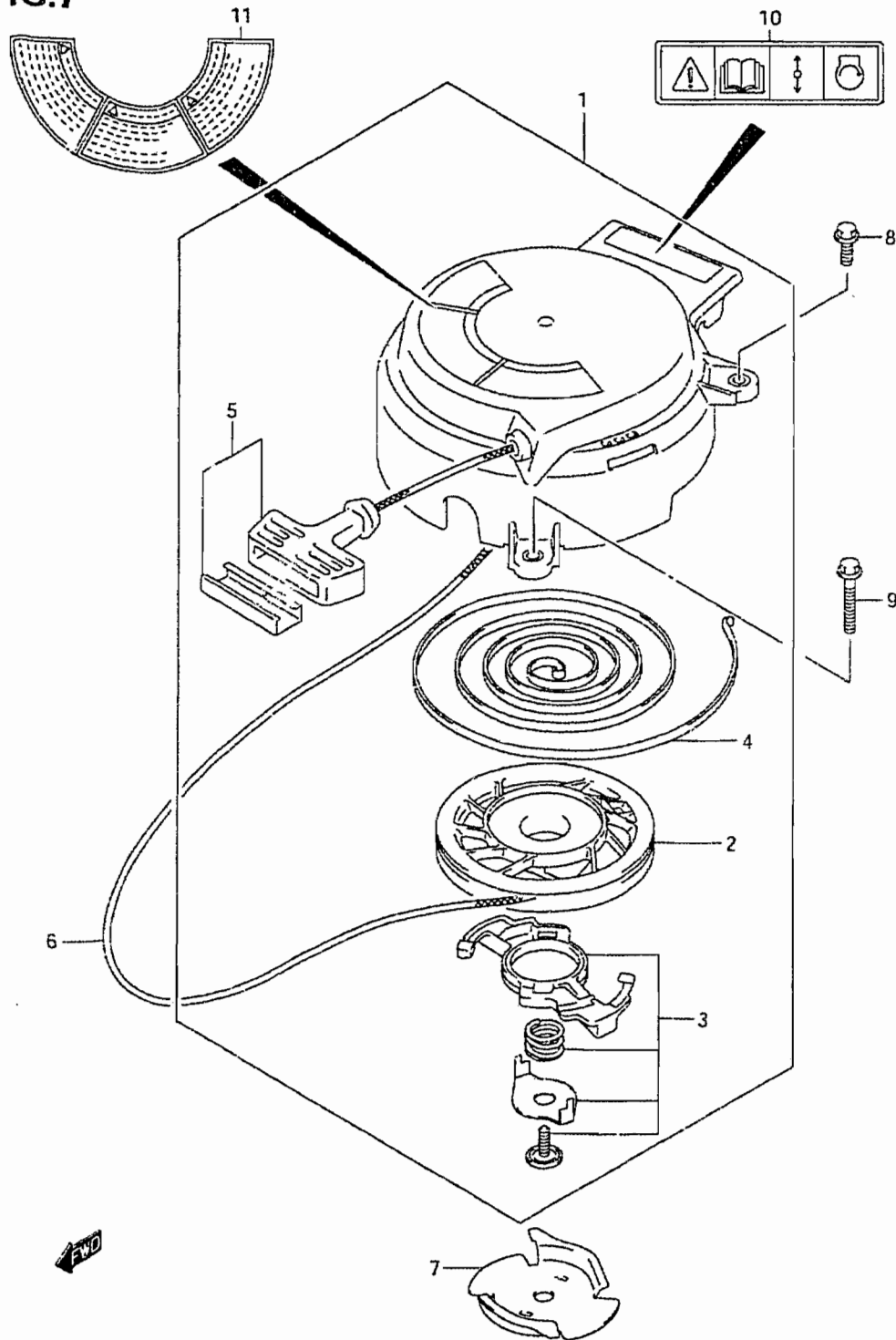
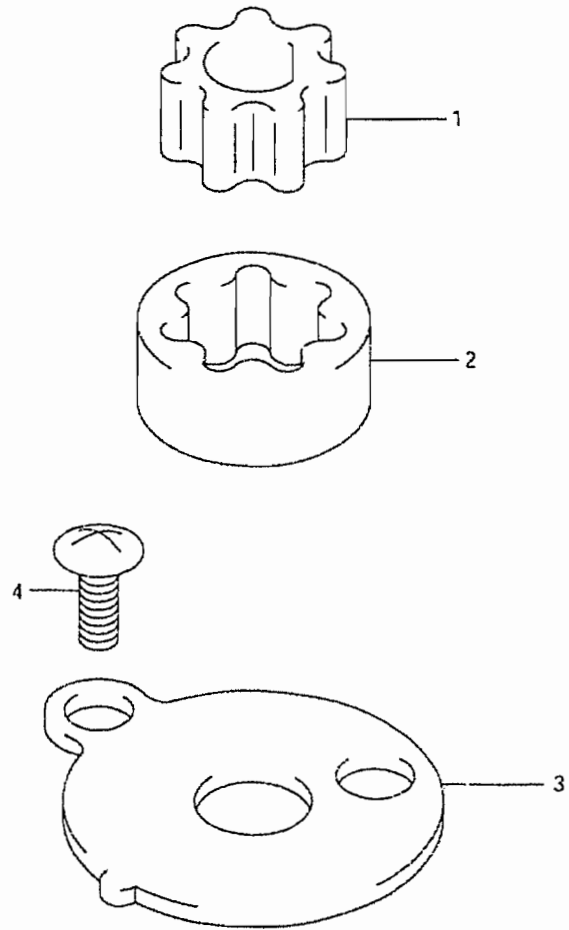


Fig.7 (B-9) RECOIL STARTER

Ref #	Part Number	Description	Qty	Remarks
1	18100-97J00	STARTER ASSY, RECOIL	1	
2	18120-97J00	.REEL	1	
3	18130-97J00	.RATCHET SET	1	
4	18142-04410	.SPRING, SPIRAL	1	
5	18210-97J00	.GRIP SET	1	
6	99000-81157-50M	ROPE	1	NOT FOR US MARKET
7	18211-97J00	PULLEY, STARTER	1	
8	01550-06207	BOLT	1	
9	01550-06357	BOLT	2	
10	69711-93E10	LABEL, S.I.G.P	1	
11	61472-93E00	LABEL, RECOIL STARTER	1	

FIG.8

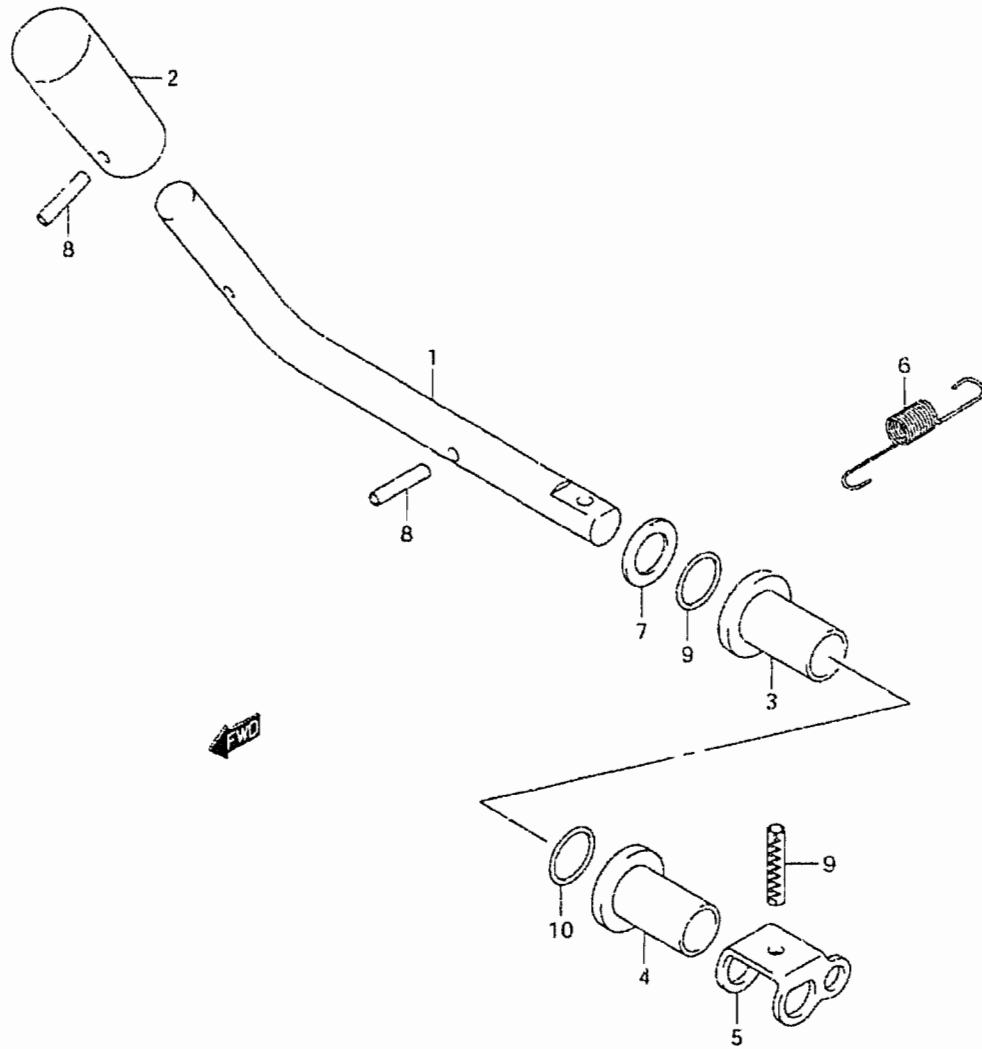
Fig.8 (B-10) OIL PUMP



Ref #	Part Number	Description	Qty	Remarks
1	16131-91J00	ROTOR, OIL PUMP INNER	1	
2	16132-91J00	ROTOR, OIL PUMP OUTER	1	
3	16161-97J00	PLATE, OIL PUMP ROTOR	1	
4	02142-0510A	BOLT, OIL PUMP ROTOR PLATE	1	

FIG.9

Fig.9 (C-2) CLUTCH LEVER



Ref #	Part Number	Description	Qty	Remarks
1	21111-97J01	LEVER, CLUTCH	1	
2	21112-97J00	KNOB, CLUTCH LEVER	1	
3	21221-97J00	BUSH, CLUTCH SHAFT	1	
4	21222-97J00	BUSH, CLUTCH SHAFT NO.2	1	
5	23211-97J01	ARM, CLUTCH ROD	1	
6	23213-97J00	SPRING, CLUTCH NOTCH	1	
7	09160-08145	WASHER (8X14X1.5)	1	
8	09205-03012	PIN, CLUTCH LEVER	2	
9	09205-04002	PIN, CLUTCH LEVER	1	
10	09280-08005	C RING (D:1.7 ID:7.7)	2	

FIG.10

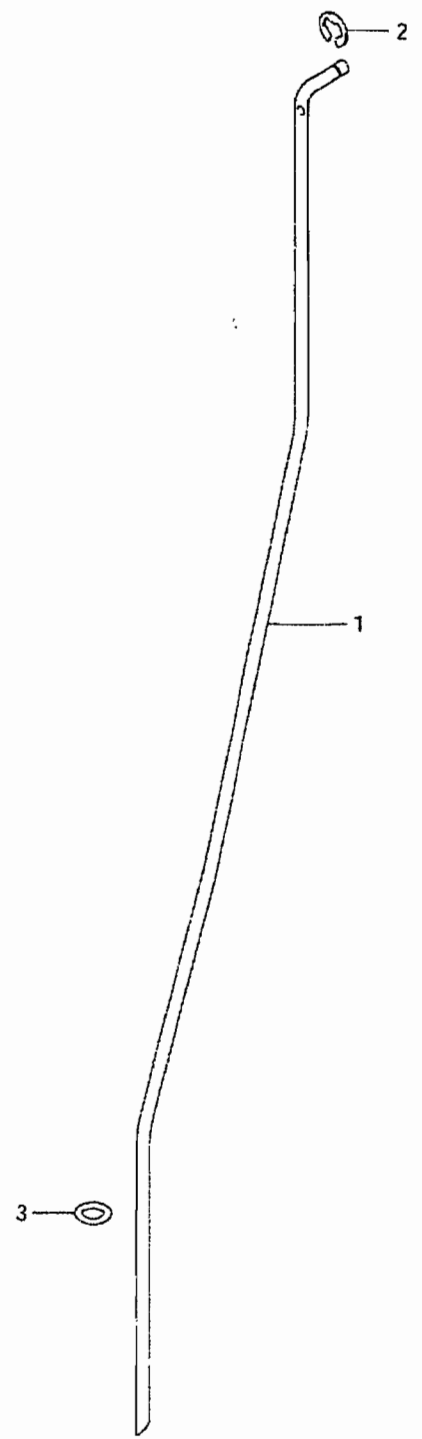
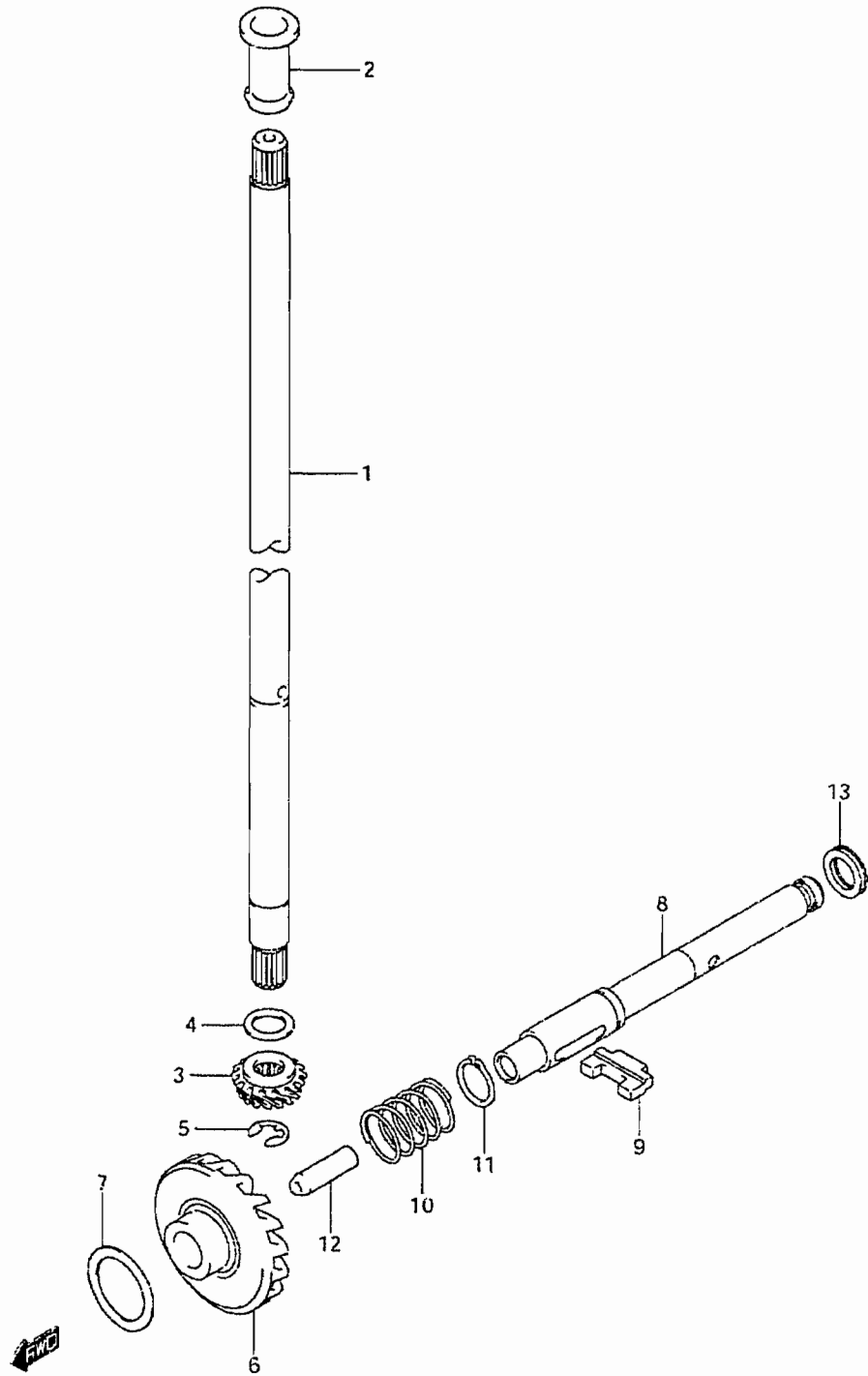


Fig.10 (C-3) SHIFT ROD

Ref #	Part Number	Description	Qty	Remarks
1	25111-97J00	ROD, SHIFT (S)	1	
2	09383-04002	E RING	1	
3	09280-05008	O RING (D:2.9 ID:4.8)	1	

FIG.11

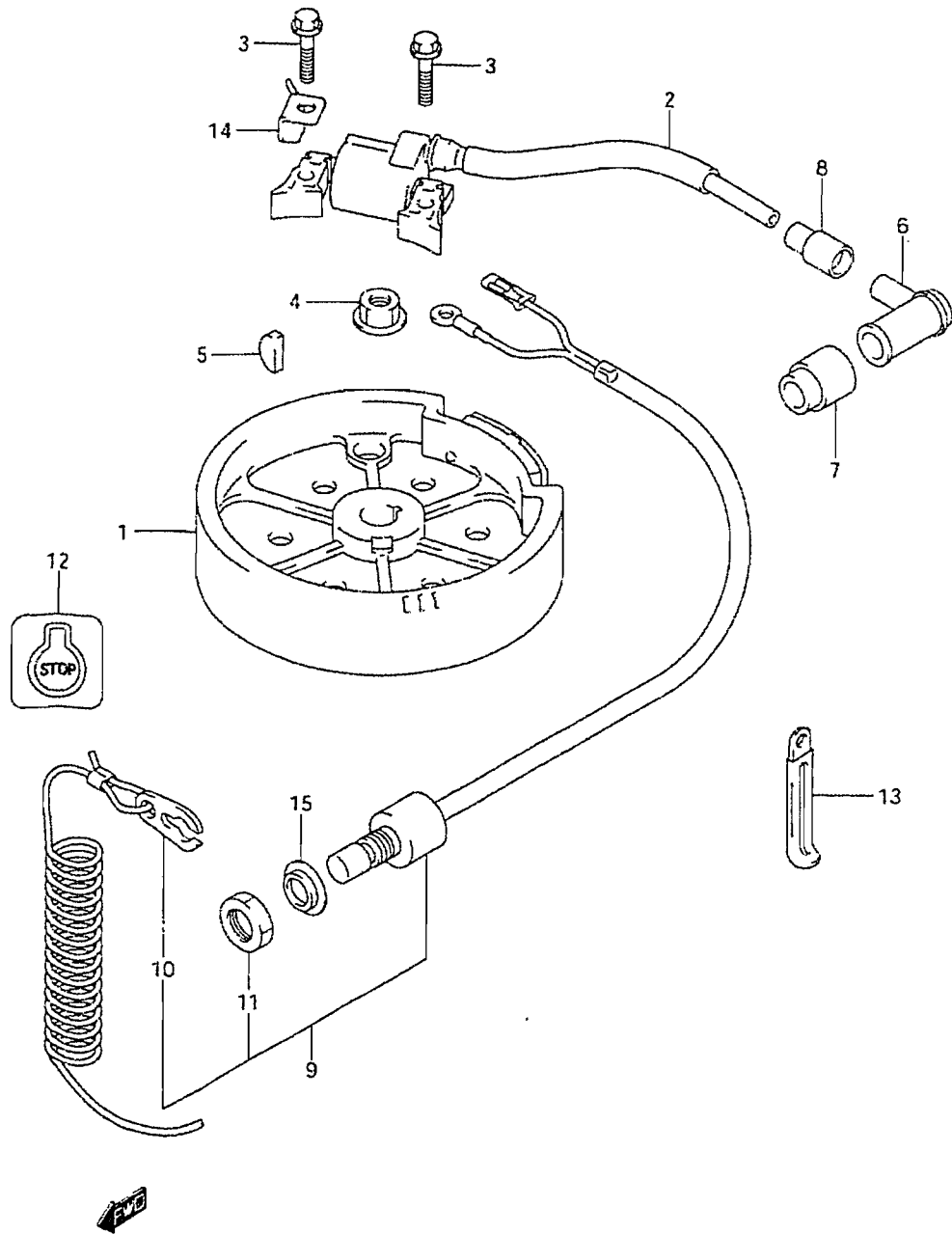
Fig.11 (C-4) DRIVE SHAFT



Ref #	Part Number	Description	Qty	Remarks
1	57111-97J00	SHAFT, DRIVE (S)	1	
2	57130-91J00	BUSH, DRIVE SHAFT	1	
3	57311-97J00	PINION	1	
4-1	09181-10015	SHIM (10X16X1.8)	1	PINION ADJ
4-2	09181-10016	SHIM (10X16X1.9)	1	
4-3	09181-10017	SHIM (10X16X2.0)	1	
4-4	09181-10018	SHIM (10X16X2.1)	1	
4-5	09181-10019	SHIM (10X16X2.2)	1	
5	08332-1106A	E RING, PINION	1	
6-1	57511-97J00	GEAR, FORWARD	1	
6-2	57510-97J00	GEAR, FORWARD	1	MODEL:09
7-1	09181-17022	SHIM (17X23X0.3)	1	FWD GEAR BACKUP
7-2	09181-17023	SHIM (17X23X0.4)	1	
7-3	09181-17024	SHIM (17X23X0.5)	1	
7-4	09181-17025	SHIM (17X23X0.6)	1	
8	57611-97J01	SHAFT, PROPELLER	1	
9	57621-97J00	SHIFTER, CLUTCH DOG	1	
10	59441-97J00	SPRING, RETURN	1	
11	08331-3112A	CIRCLIP, PROP SHAFT	1	
12	57631-97J00	ROD, PUSH	1	
13-1	09160-10106	WASHER (10X14X1.6)	1	PROP SFT REV THRUST
13-2	09160-10107	WASHER (10X14X1.7)	1	
13-3	09181-10015	WASHER (10X16X1.8)	1	
13-4	09181-10016	WASHER (10X16X1.9)	1	
13-5	09181-10017	WASHER (10X16X2.0)	1	

FIG.12

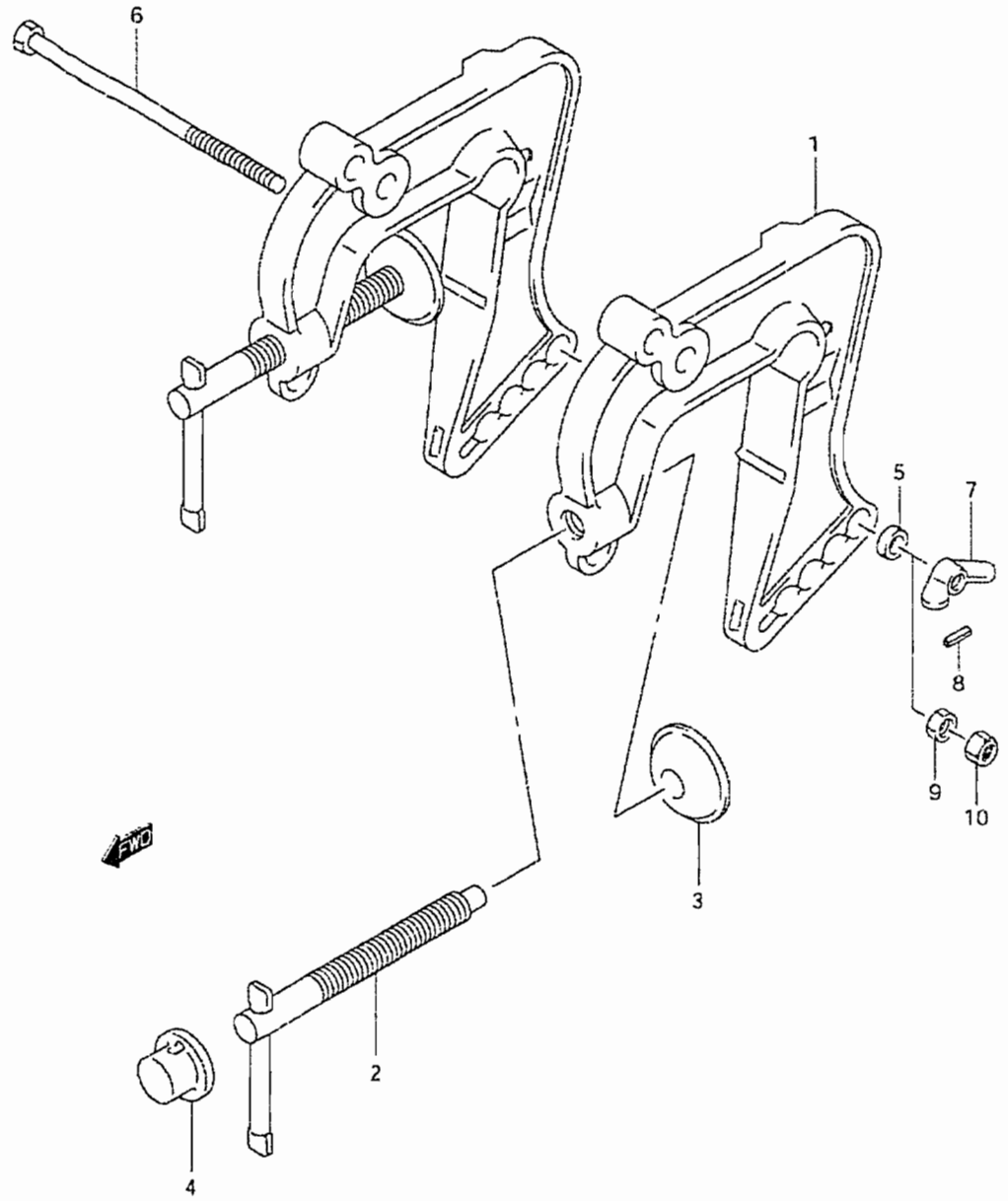
Fig.12 (C-5) MAGNETO



Ref #	Part Number	Description	Qty	Remarks
1	32102-97J00	FLYWHEEL	1	
2	33410-97J01	UNIT, IGNITER	1	
3	01550-06307	BOLT	2	
4	08316-10107	NUT	1	
5	08341-31039	KEY, WOODRUFF	1	
6	33510-20G00	CAP, SPARK PLUG	1	
7	33541-97J00	SEAL, SPARK PLUG	1	
8	33542-97J00	SEAL, HIGH TENSION CORD	1	
9	37830-97J10	SWITCH ASSY, EMERGENCY	1	
10	37823-92E01	.PLATE, LOCK	1	
11	37826-92E00	.NUT	1	
12	37835-95D00	LABEL, STOP	1	
13	29404-93J10	CLAMP (L:65)	1	
14	19183-97J00	HOLDER, THROTTLE CABLE	1	
15	09306-13006	BUSH, EMERGENCY & STOP SW	1	

FIG.13

Fig.13 (D-2) CLAMP BRACKET



Ref #	Part Number	Description	Qty	Remarks
1-1	41111-97J00-0EP	BRACKET, CLAMP (BLACK)	2	
1-2	41111-97J10-0EP	BRACKET, CLAMP (BLACK)	2	MODEL:08
1-3	41111-97J20-0EP	BRACKET, CLAMP (BLACK)	2	MODEL:09
2	41210-97J00	HANDLE, CLAMP	2	
3	41213-98100	PLATE, CLAMP	2	
4	41214-97J00	CAP, CLAMP SCREW	2	
5	59181-97J10	SPACER, TILT LOCK	1	
6	09101-06009	BOLT, TILT LOCK	1	
7	09144-06004	NUT, TILT LOCK WING	1	MODEL:06,07
8	09205-03019	PIN, TILT LOCK	1	MODEL:06,07
9	23118-94J00	NUT, TILT LOCK NO.1	1	MODEL:08,09
10	09159-06079	NUT, TILT LOCK NO.2	1	MODEL:08,09

FIG.14

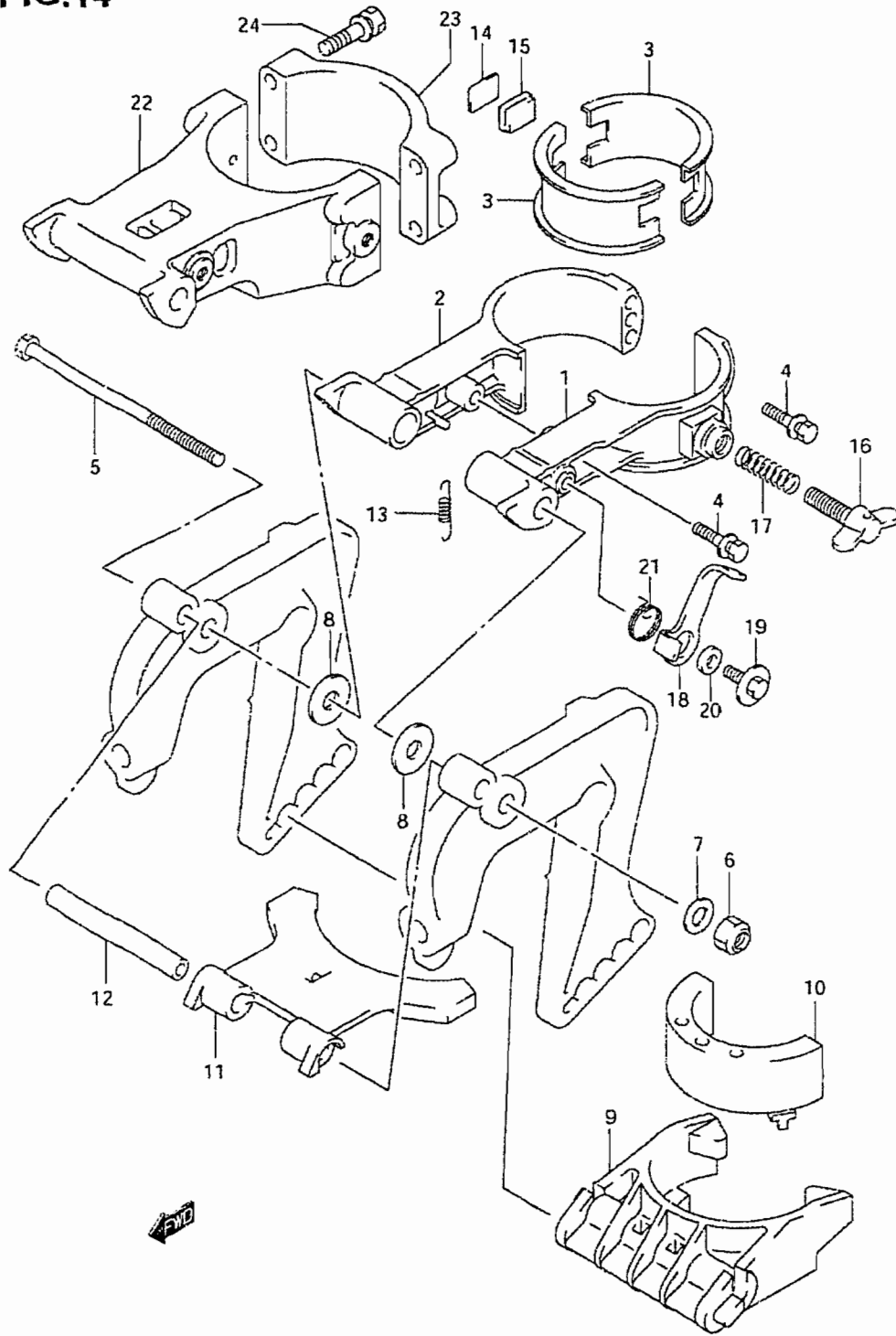


Fig.14 (D-3) SWIVEL BRACKET

Ref #	Part Number	Description	Qty	Remarks
1	43111-97J00-0EP	BRACKET, SWIVEL PORT (BLACK)	1	MODEL:06,07 ->43110-97J10-0EP BRACKET ASSY,SWIVEL
2	43121-97J00-0EP	BRACKET, SWIVEL STBD (BLACK)	1	MODEL:06,07 ->43110-97J10-0EP BRACKET ASSY,SWIVEL
3	43711-97J00	BUSH, STEERING UPPER	2	
4	09116-06121	BOLT, SWIVEL BRACKET	2	MODEL:06,07
5	59111-97J00	BOLT, SWIVEL SHAFT	1	
6	09159-08018	NUT, SWIVEL SHAFT	1	
7	09160-08091	WASHER, SWIVEL SHAFT (8.5X14X1.0)	1	
8	09160-08081	WASHER, TILT FRICTION (8.5X23X1.5)	2	
9-1	45411-97J00	BLOCK, THRUST	1	
9-2	45411-97J20	ELOCK, THRUST	1	MODEL:09
10	54151-97J00	MOUNT, LOWER THRUST	1	
11	43751-97J01	BRACKET, STOPPER	1	
12	43752-97J00	SHAFT, STOPPER	1	
13	59443-97J00	SPRING, STOPPER	1	
14-1	43415-97J00	PLATE, STEERING ADJUSTER	1	
14-2	43415-97J10	PLATE, STEERING ADJUSTER	1	MODEL:08,09
15-1	43416-97J00	RUBBER, STEERING ADJUSTER	1	
15-2	43416-97J10	RUBBER, STEERING ADJUSTER	1	MODEL:08,09
16	09119-06110	BOLT, STEERING ADJUSTER	1	
17	09440-09042	SPRING, STEERING ADJUSTER	1	
18	41221-97J10	LEVER, TILT LOCK	1	<-41221-97J00
19	09116-06127	BOLT, TILT LOCK LEVER	1	
20	59181-97J10	SPACER, TILT LOCK LEVER	1	
21-1	59444-97J00	SPRING, TILT LOCK	1	
21-2	59444-97J10	SPRING, TILT LOCK	1	MODEL:08,09

FIG.14

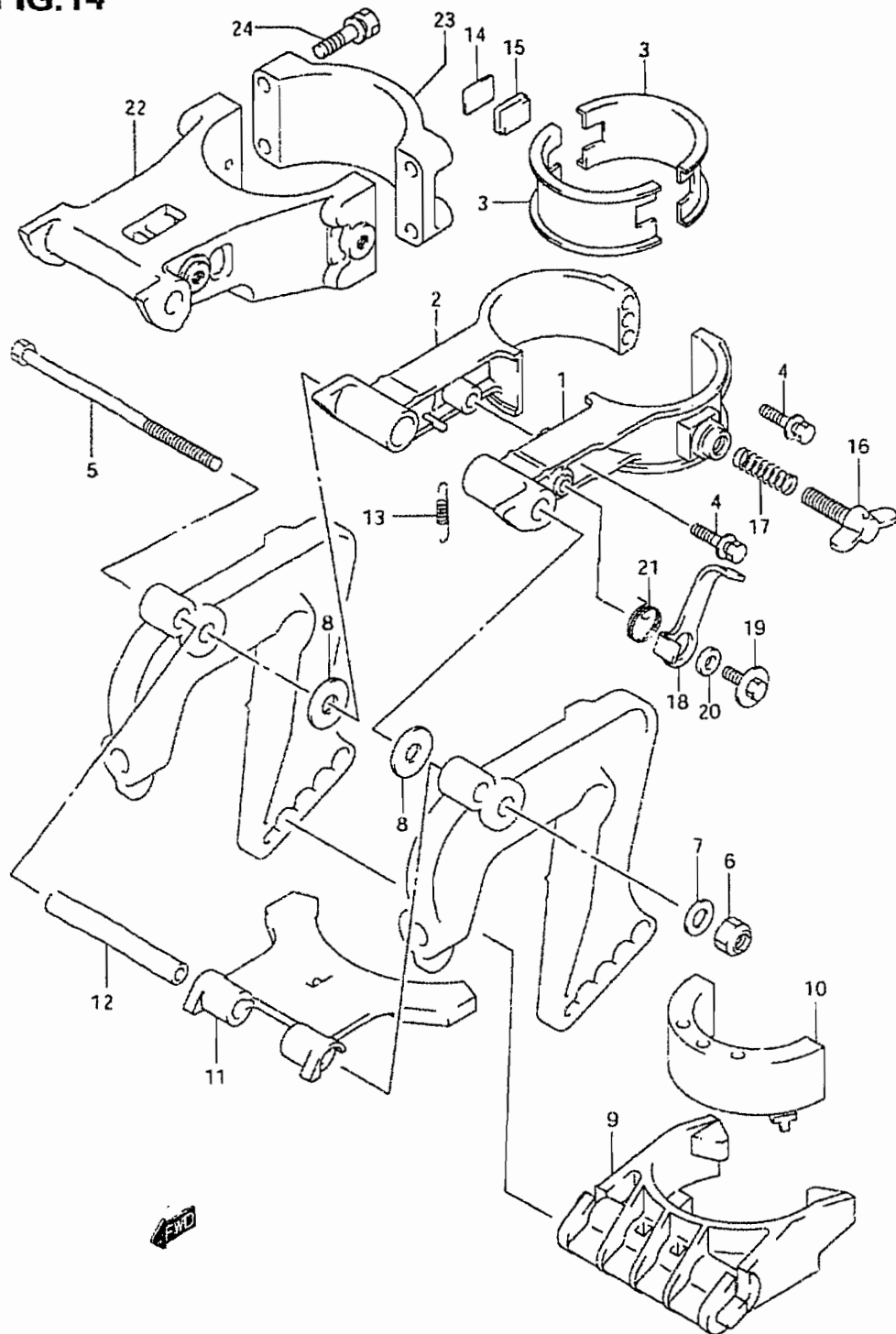
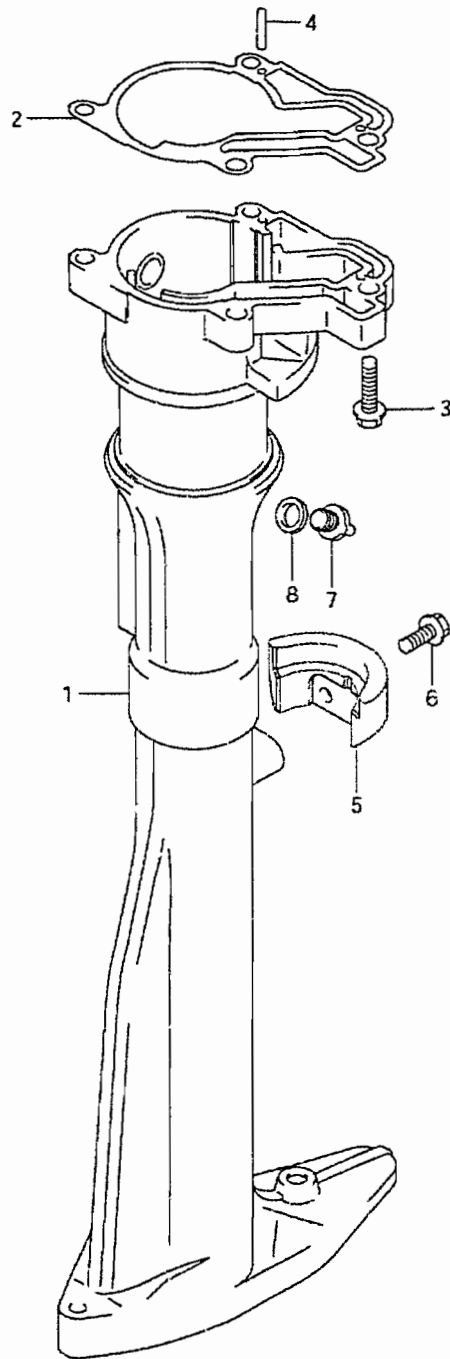


Fig.14 (D-4) SWIVEL BRACKET

Ref #	Part Number	Description	Qty	Remarks
22-1	43111-97J10-0EP	BRACKET, SWIVEL	1	MODEL:08
22-2	43111-97J20-0EP	BRACKET, SWIVEL	1	MODEL:09
23-1	43121-97J10-0EP	COVER, SWIVEL BRACKET	1	MODEL:08
23-2	43121-97J20-0EP	COVER, SWIVEL BRACKET	1	MODEL:09
24	09116-06207	BOLT, SWIVEL BRACKET	4	MODEL:08,09
25-1	43110-97J10-0EP	BRACKET ASSY, SWIVEL	1	OPT,NOT SHOWN INC.NO.22,23,24 MODEL:08
25-2	43110-97J20-0EP	BRACKET ASSY, SWIVEL	1	INC.NO.22,23,24 MODEL:09

FIG.15

Fig.15 (D-5) DRIVE SHAFT HOUSING



Ref #	Part Number	Description	Qty	Remarks
1-1	52111-97J00-0EP	HOUSING, DRIVE SHAFT (BLACK)	1	
1-2	52111-97J10-0EP	HOUSING, DRIVE SHAFT (BLACK)	1	MODEL:09
2	52113-97J00	GASKET, DRIVE SHAFT HSG	1	
3	29116-93J00	BOLT, DRIVE SHAFT HSG	4	
4	09205-03019	PIN, DRIVE SHAFT HSG KNOCK	2	
5-1	52112-97J10-0EP	STOPPER, REV THRUST (BLACK)	1	<-52112-97J00-0EP
5-2	52112-97J20-0EP	STOPPER, REV THRUST (BLACK)	1	MODEL:09
6	29116-93J00	BOLT, STOPPER REV THRUST	2	
7	61155-97J00	UNION, WATER INSPECTION	1	MODEL:09
8	59178-97J00	GASKET, WATER INSPECTION	1	MODEL:09

FIG.16

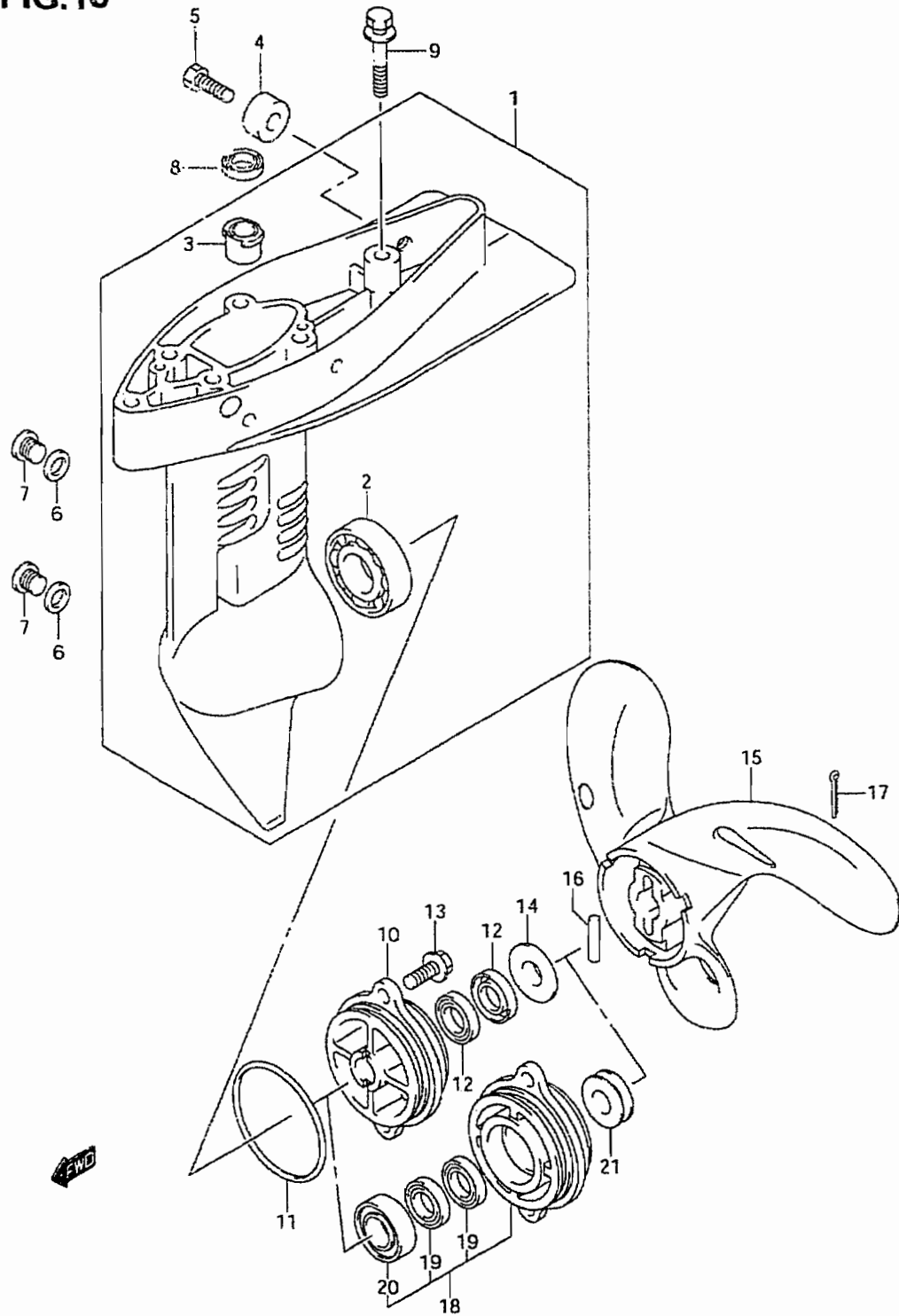
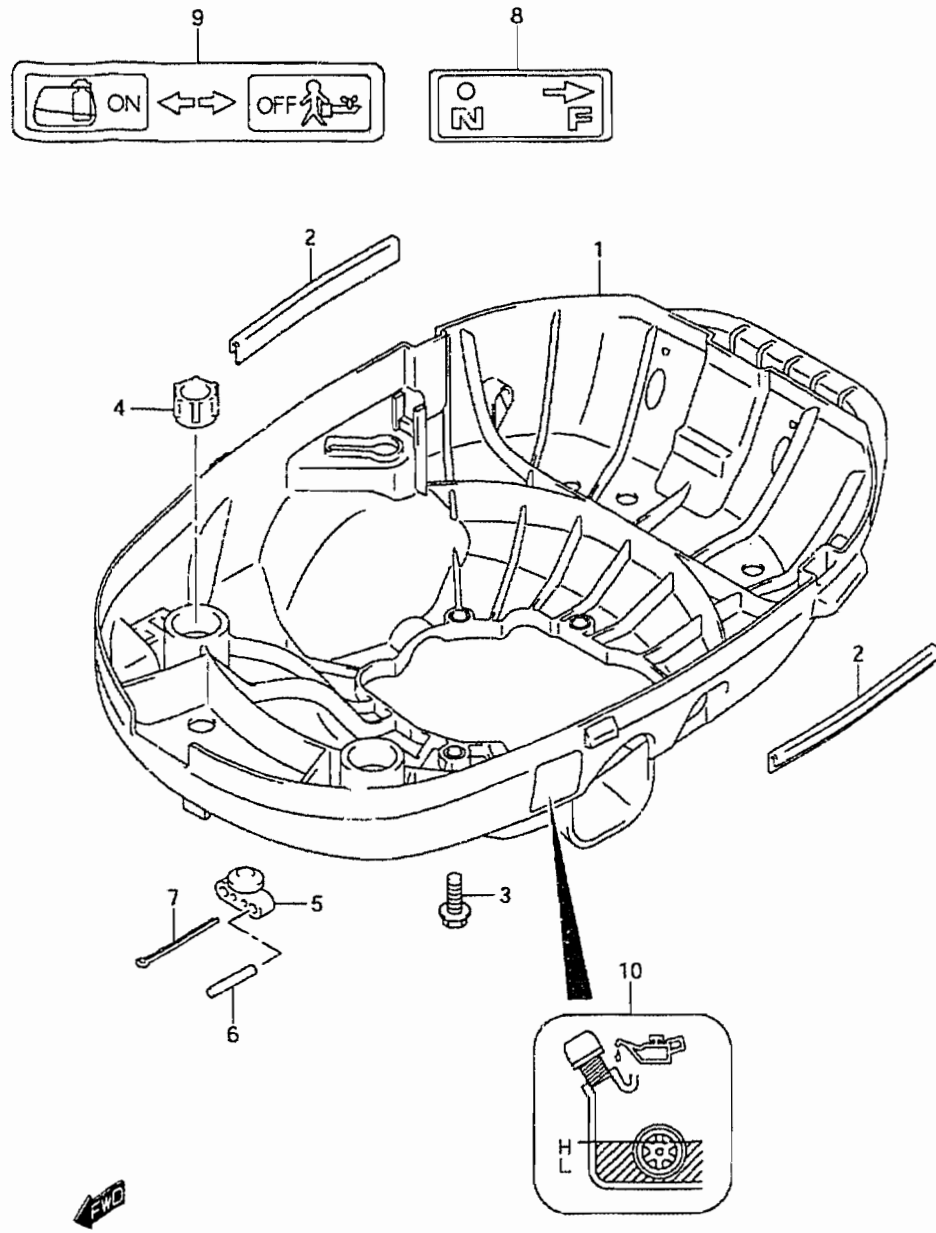


Fig.16 (D-6) GEAR CASE

Ref #	Part Number	Description	Qty	Remarks
1-1	55110-97J00-0EP	CASE, GEAR (BLACK)	1	->55110-97J01-0EP USED WITH 09116-06094-0EP
1-2	55110-97J01-0EP	CASE, GEAR (BLACK)	1	DF2.5:687145~
1-3	55110-97J10-0EP	CASE, GEAR (BLACK)	1	MODEL:09
2	09262-17019	.BEARING, FORWARD GEAR	1	
3	59311-97J00	.BUSH, PINION	1	
4	55321-87J00	ANODE, PROTECTION	1	
5	09103-06281	BOLT, ANODE PROTECTION	1	
6	59178-97J00	GASKET, DRAIN PLUG	2	
7	09248-08001	PLUG, DRAIN	2	
8	59299-97J00	SEAL, DRIVE SHAFT OIL	1	
9	09116-06099	BOLT (6X35)	2	
10	56120-97J00-0EP	HOUSING, PROP SFT BRG (BLACK)	1	MODEL:06~08 ->56120-97J10-0EP
11	59291-97J00	O RING, PROP SFT BRG HOUSING	1	
12	09282-10008	SEAL, PROP SFT OIL	2	
13	09116-06094	BOLT, PROP SFT BRG HSG (6X15)	2	
14	56123-97J00	PROTECTOR, PROP SFT OIL SEAL	1	MODEL:08,09
15-1	58111-97J00-019	PROPELLER (3X188X135)	1	MODEL:06~09
15-2	58111-98465-019	PROPELLER (3X188X115)	1	MODEL:06
16	09202-04002	PIN, SHEAR	1	
17	09204-02001	PIN, COTTER	1	
18	56120-97J10-0EP	HOUSING, PROP SFT BRG	1	MODEL:09
19	09282-10008	.SEAL, PROP SFT OIL	2	MODEL:09
20	08110-60000	.BEARING, PROP SFT	1	MODEL:09
21	56123-97J10	PROTECTOR, PROP SFT OIL SEAL	1	MODEL:09

FIG.17

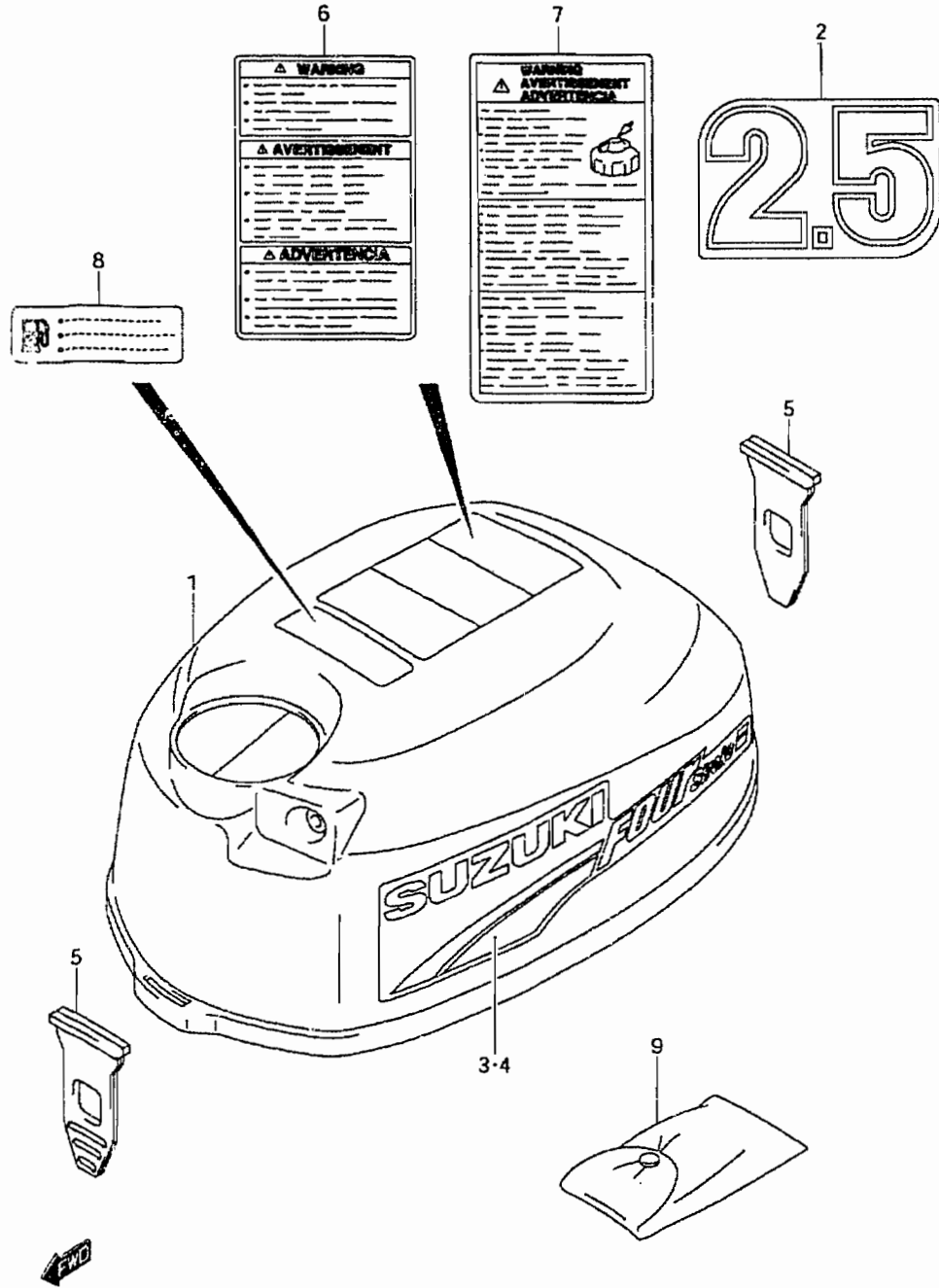
Fig.17 (D-7) LOWER COVER



Ref #	Part Number	Description	Qty	Remarks
1	61110-97J00-YR9	COVER, LOWER (GRAY)	1	
2	61135-97J00	CUSHION, LOWER COVER	2	
3	29116-93J00	BOLT (6X20)	4	
4	61151-91J01	CUSHION, FUEL TANK HOLDER	2	
5	61521-91J00	HOLDER, SHEAR PIN	1	
6	09202-04002	PIN, SHEAR	2	
7	09204-02001	PIN, PROP NUT COTTER	1	
8	21131-97J20	MARK, CLUTCH SHIFT	1	
9	61211-97J00	MARK, FUEL COCK	1	
10	61212-97J00	MARK, OIL LEVEL	1	

FIG.18

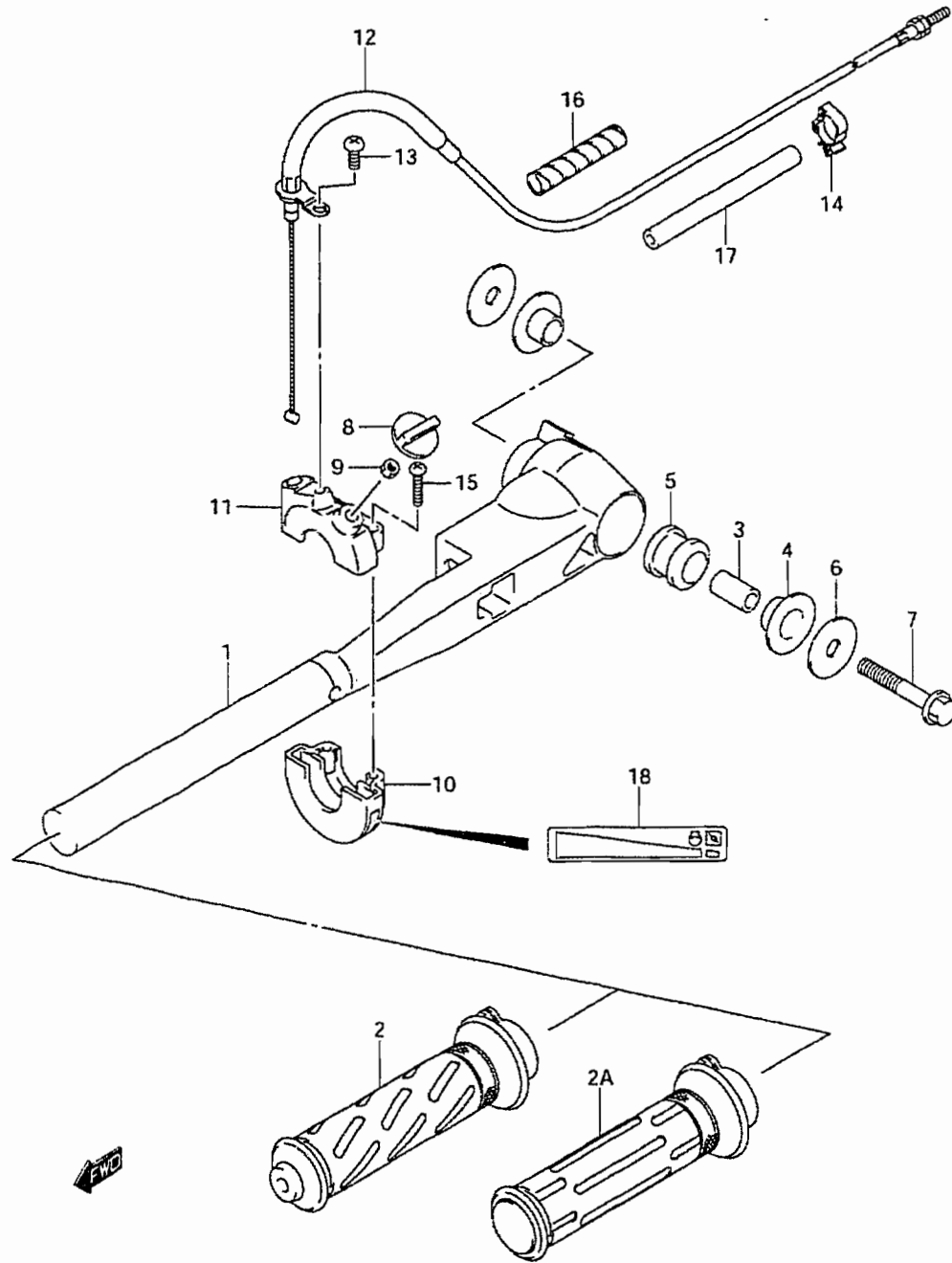
Fig.18 (D-8) ENGINE COVER



Ref #	Part Number	Description	Qty	Remarks
1	61411-97J00-YR9	COVER, ENGINE UPPER	1	
2	61435-97J10	MARK, EMBLEM REAR (DF2.5)	1	
3	61443-97J00	STRIPE, ENGINE COVER STBD	1	
4	61453-97J00	STRIPE, ENGINE COVER PORT	1	
5	61611-97J00	FASTENER, ENGINE COVER	2	
6	61458-97J00	LABEL, ENGINE COVER	1	MODEL:06
7	61458-97J10	LABEL, ENGINE COVER	1	MODEL:07~09
8	69716-99E13	LABEL, FUEL LIMITATION	1	
9	09800-01007	TOOL ASSY	1	

FIG.19

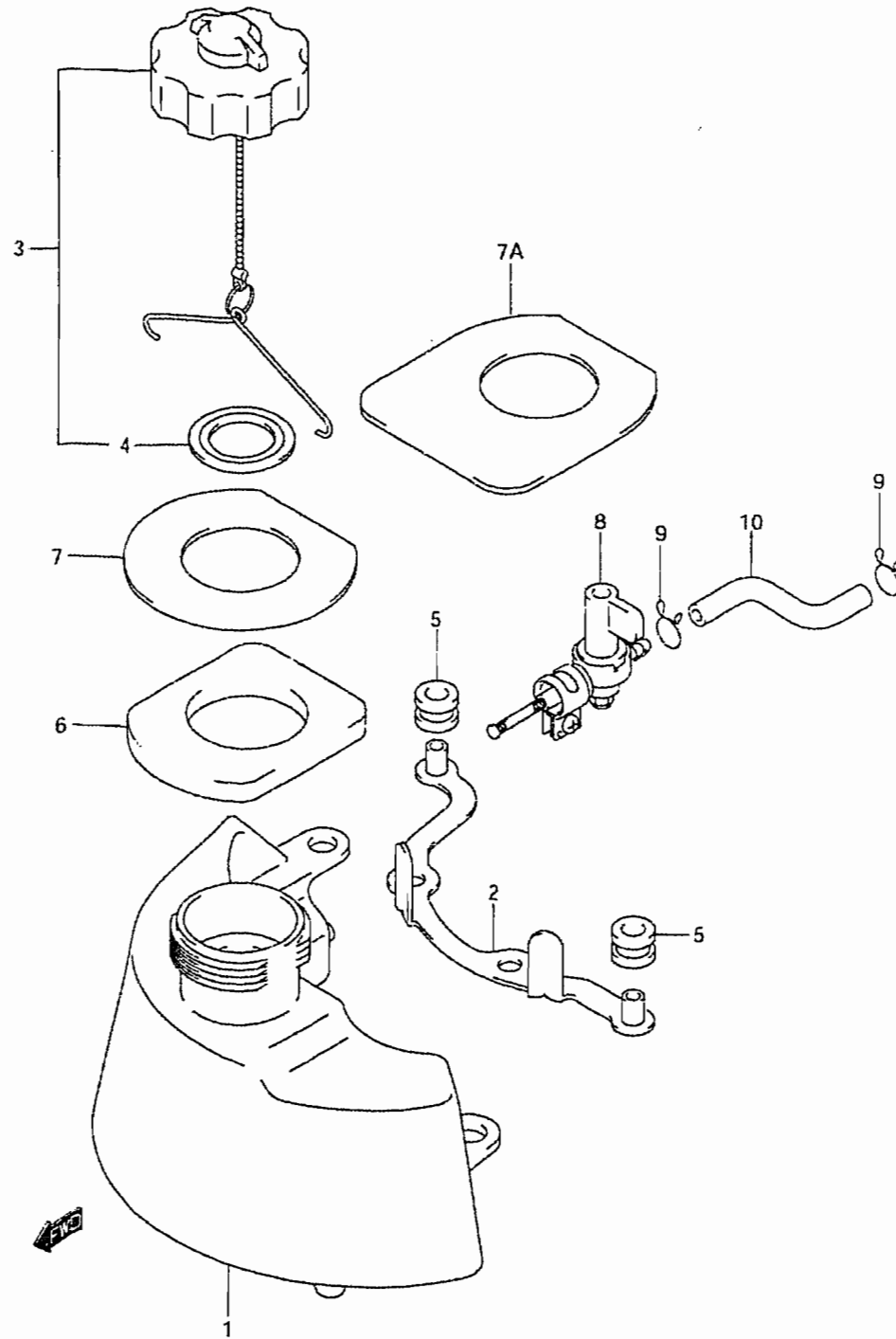
Fig.19 (D-9) TILLER HANDLE



Ref #	Part Number	Description	Qty	Remarks
1-1	63111-97J00-0EP	HANDLE, TILLER (BLACK)	1	
1-2	63111-97J10-0EP	HANDLE, TILLER (BLACK)	1	MODEL:09
2	57110-09G10	GRIP, THROTTLE	1	MODEL:06
2A	63210-97J00	GRIP, THROTTLE	1	MODEL:07~09
3	59181-97J00	SPACER, TILLER HANDLE	1	
4	59315-97J00	BUSH, TILLER HANDLE	2	
5	63116-97J00	MOUNT, TILLER HANDLE	1	
6	09160-08152	WASHER, TILLER HANDLE (8.5X33X1.5)	2	
7	09116-08138	BOLT, HANDLE PIVOT (8X40)	1	
8	63244-97J00	KNOB, THROTTLE ADJUST	1	
9	09140-05005	NUT, THROTTLE ADJUST KNOB (M5)	1	
10	57121-09G00	CASE, THROTTLE UPPER	1	
11	67821-97J00	CASE, THROTTLE LOWER	1	
12	63610-97J00	CABLE ASSY, THROTTLE	1	
13	02112-05127	SCREW, THROTTLE CABLE	1	
14	23915-78A20	CLAMP, THROTTLE CABLE	2	
15	59125-97J00	SCREW, THROTTLE CABLE	2	
16	33833-91J00	TUBE, THROTTLE CABLE (6X8X250)	1	L:250->50
17	09352-90133-600	PROTECTOR, THROTTLE CABLE (9X13X600)	1	L:600->90
18	69714-97J01	MARK, HANDLE GRIP	1	

FIG.20

Fig.20 (D-10) FUEL TANK



Ref #	Part Number	Description	Qty	Remarks
1	65110-97J00	TANK, FUEL	1	
2	65260-97J00	BRACKET, FUEL TANK	1	
3	65510-91J01	CAP ASSY, FUEL TANK	1	
4	09168-32001	.GASKET, TANK CAP	1	
5	09320-09039	CUSHION	2	
6	65281-97J00	GROMMET, FUEL TANK	1	
7	65284-97J00	RUBBER, FUEL TANK GROMMET	1	MODEL:06,07 ->65284-97J11
7A	65284-97J11	RUBBER, FUEL TANK GROMMET	1	MODEL:08~09
8	66100-97J00	COCK ASSY, FUEL	1	
9-1	15191-97J00	HOSE, FUEL (COCK TO CARB)	1	
9-2	15191-97J10	HOSE, FUEL (COCK TO CARB)	1	MODEL:09
10	59412-91J00	CLIP, FUEL HOSE	2	

FIG.21

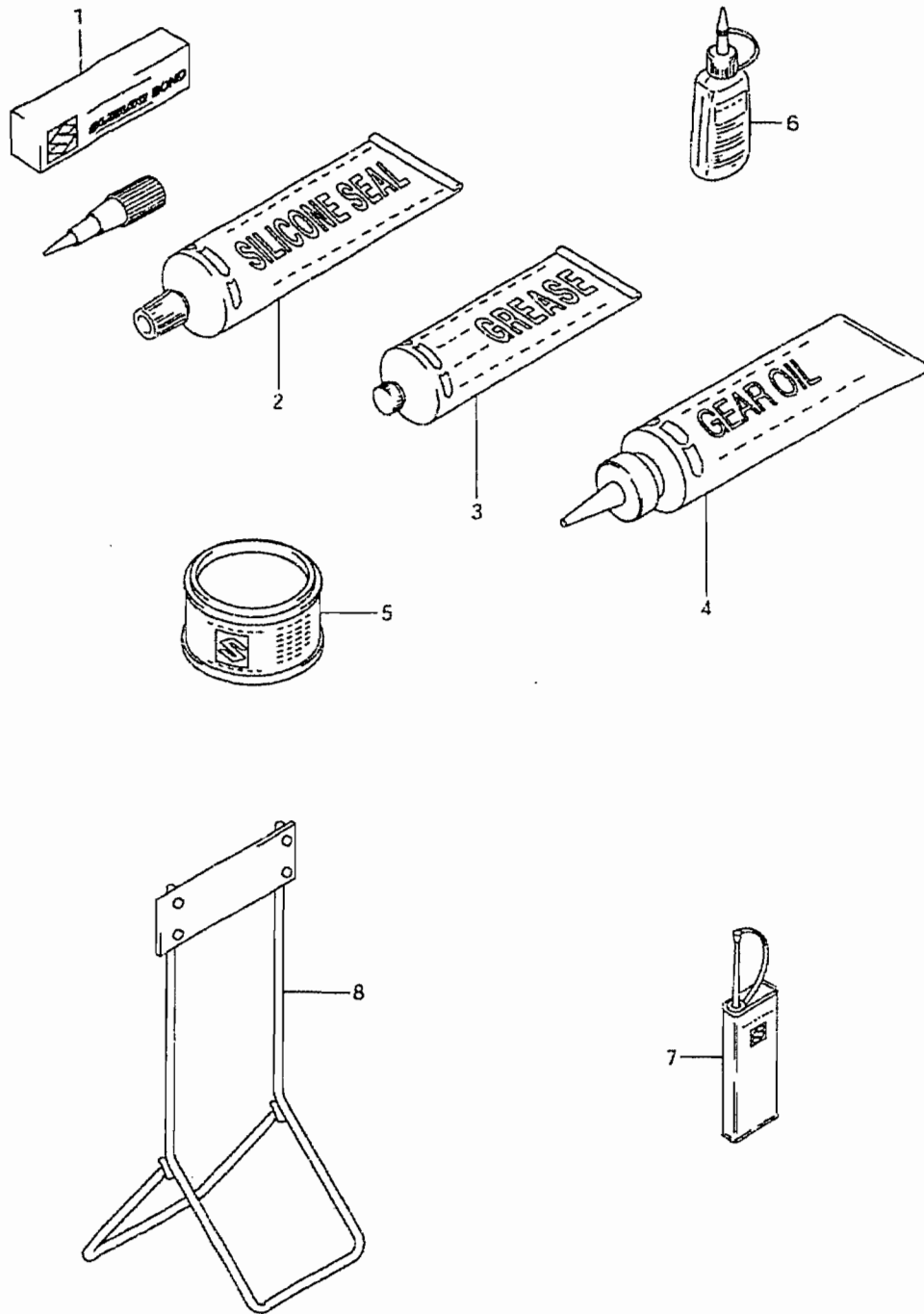


Fig.21 (D-11) OPTIONAL

Ref #	Part Number	Description	Qty	Remarks
1-1	99000-31110	LIQUID GASKET NO.1215	1	250G, FOR CRANK CASE
1-2	99000-31010	LIQUID GASKET BLACK	1	150G, FOR CRANK CASE
2	99000-31120	LIQUID GASKET NO.1212C SILICO	1	50G, FOR GEAR CASE
3	99000-25161	GREASE, WATER RESISTANT	1	250G
4	99000-22540	GEAR OIL, OUTBOARD MOTOR	1	400CC
5	99000-25011	SUPER GREASE (A) NO.3	1	450G, FOR CRANK OIL SEAL
6-1	99000-32050	THREAD LOCK NO.1342	1	50G, BLUE
6-2	99000-32020	THREAD LOCK NO.1333B	1	50G, RED
7	99000-32040	THREAD LOCK NO.1401	1	200G
8	09914-39911	HANGER, ENGINE	1	
9-1	99011-97J00-03B	MANUAL, OWNER'S ('06)	1	FOR U.S., CANADA MODEL
9-2	99011-97J01-03B	MANUAL, OWNER'S ('07)	1	FOR U.S., CANADA MODEL
9-3	99011-97J02-03B	MANUAL, OWNER'S ('08)	1	FOR U.S., CANADA MODEL
9-4	99011-97J03-03B	MANUAL, OWNER'S ('09)	1	FOR U.S., CANADA MODEL